

A man is the central figure, wearing a dark navy blue, knee-length coat with a notched collar and large buttons. Underneath, he wears a patterned tie with green, red, and white floral motifs over a light-colored turtleneck. He also wears a dark cap with the text 'LES DEUX' and a small logo. He is looking off to the side with a serious expression. The background is a blurred street scene with a red building and a circular red sign that says 'Diner'.

# PRODUCT CATALOGUE

PRE-SPRING '25

*Les Deux*



“We’re inspired by community and unite preppy and street styles with a nod to our Scandinavian heritage.”

## CONTENT

7	Coats	107	Sweatshirts
13	Jackets	121	T-shirts
25	Vests	141	Sweatpants
29	Overshirts	145	Pyjamas
41	Shirts	149	Caps
57	Knitwear	163	Beanies & Scarfs
75	Tracksuits	169	Socks & Ties
81	Pants	175	Bags
95	Hoodies	179	Shoes



## RESPONSIBILITY AT LES DEUX

It's never been more important for brands to reduce their impact, and there are three main ways that we're working towards this at Les Deux.

### MATERIALS

As part of our Material Strategy, we choose more responsible materials that have lower negative impact like recycled polyester and organic cotton whenever we can. We're working to reduce our use of virgin materials and multiple fiber mixes and increase our use of mono materials, which are easier to recycle.

We've also cut down on the amount of packaging we use by, for example, folding our T-shirts an extra time so we can use smaller poly bags.

### DESIGN

Our goal has always been to design clothing that lasts, both in terms of the production quality and from a style perspective. Clothing that lasts for longer needs to be replaced less often, which is one of the biggest ways that consumers and brands can make a difference.

Our newly launched Rewear program is another big step towards extending the lifespan of our clothes, and it gives customers the chance to swap their old Les Deux clothing for store credit or buy preowned styles for less. It's currently live in Denmark for online purchases only, and we're aiming for a full European launch by Q2 of next year.

### SUPPLY CHAIN

You can't reduce your impact if you don't know where you can do better. To help us pinpoint areas where we can improve, we're mapping our suppliers in Tiers 1 and 2 so we can make decisions based on data.

We only work with suppliers who've signed our code of conduct, which includes animal welfare and child labor policies, chemical restrictions, and more.

## OUR MEMBERSHIPS



We are certified to the *GRS*, which certifies recycled material from the source to final product.



Through *Better Cotton* and its Partners, farmers receive training on how to use water efficiently, care for the health of the soil and natural habitats, reduce use of the most harmful chemicals and apply decent work principles.

We strive to use *Better Cotton* for as many products containing cotton as possible as a part of our responsibility strategy.



*Leather Working Group* is an international multi-stakeholder organization that aims to assess and promote environmental best practice within the leather manufacturing industry.

All our leather products or products with leather details are made of leather from LWG certified tanneries.



**COATS**



**Michael Herringbone Wool Coat 3.0 - Mountain Grey/Ivory**

**Quality** 57% Wool - 23% Polyester - 12% Acrylic - 8% Polyamide  
 Heavy coat in Italian wool mix herringbone fabric with raglan sleeves, classic paspel pockets and button closure

<b>Made in</b>	<b>Delivery</b>	<b>Style No.</b>	<b>Size set</b>
Turkey	Oct-Nov	LDM620087	XS - XXL



**Michael Houndstooth Wool Coat 3.0 - Warm/Black**

**Quality** 50% Wool - 50% Recycled Polyester  
 Heavy coat in wool mix houndstooth fabric with raglan sleeves, classic paspel pockets and button closure

Comes with matching bags, cap and home slippers

<b>Made in</b>	<b>Delivery</b>	<b>Style No.</b>	<b>Size set</b>
China	Oct-Nov	LDM620085	XS - XXL



**Michael Solid Wool Coat 3.0 - Dark Navy**

**Quality** 50% Wool - 50% Recycled Polyester  
 Classic coat in heavy solid wool mix fabric with raglan sleeves, classic paspel pockets and button closure

<b>Made in</b>	<b>Delivery</b>	<b>Style No.</b>	<b>Size set</b>
China	Oct-Nov	LDM620086	XS - XXL





#### Mateo Coat 3.0 - Light Desert Sand

**Quality** 54% Cotton - 38% Polyester - 8% Polyamide

Canvas coat in brushed dry cotton-blend material with paspolied pockets, collar latch and covered button closure. The coat has a water repellent finish and is half-lined with lightweight check pattern cotton flannel

Made in	Delivery	Style No.	Size set
China	Oct-Nov	LDM620076	XS - XXL



#### Mateo AOP Coat 3.0 - Chive Green/Dark Ochre

**Quality** 54% Cotton - 38% Polyester - 8% Polyamide

Canvas coat in All over printed dry cotton-blend material with paspolied pockets, collar latch and covered button closure. The coat has a water repellent finish and is half-lined with lightweight cotton flannel

Made in	Delivery	Style No.	Size set
China	Oct-Nov	LDM620088	XS - XXL





**JACKET**





**Noah Jacquard Varsity Jacket - Rosin/Chive Green**

**Quality** Body: 100% Polyester, Sleeves: 50% Wool - 50% Polyester  
 Padded varsity jacket in a soft colored flower jacquard with sleeves in contrast wool blend fabric. The jacket is closed with snap buttons and has a subtle Les Deux logo embroidered on sleeve

<b>Made in</b> China	<b>Delivery</b> Oct-Nov	<b>Style No.</b> LDM610173	<b>Size set</b> XS - XXL
-------------------------	----------------------------	-------------------------------	-----------------------------



**Rhett Varsity Jacket - Rosin**

**Quality** 70% Wool - 30% Recycled Polyester  
 Mono colored varsity style jacket in a soft wool-blend with small logo flower embroidery at sleeve, shirt collar and ribbed cuffs

<b>Made in</b> China	<b>Delivery</b> Oct-Nov	<b>Style No.</b> LDM610162	<b>Size set</b> XS - XXL
-------------------------	----------------------------	-------------------------------	-----------------------------



**Les Deux Varsity Leather Jacket - Dark Brown**

**Quality** 100% Sheep Leather  
 Varsity jacket in heavy weight leather with seasonal Les Deux logo patches, pasple pockets, ribbed hem and snap button closure at front

<b>Made in</b> India	<b>Delivery</b> Oct-Nov	<b>Style No.</b> LDM610177	<b>Size set</b> XS - XXL
-------------------------	----------------------------	-------------------------------	-----------------------------







**Montana Jacket 3.0 - Light Desert Sand**

**Quality** 54% Cotton - 38% Polyester - 8% Polyamide

Canvas jacket in brushed dry cotton-blend with pouch pockets, contrast collar, and covered zipper closure

<b>Made in</b> China	<b>Delivery</b> Oct-Nov	<b>Style No.</b> LDM610154	<b>Size set</b> XS - XXL
-------------------------	----------------------------	-------------------------------	-----------------------------



**Montana Jacket 3.0 - Dark Navy**

**Quality** 54% Cotton - 38% Polyester - 8% Polyamide

Canvas jacket in brushed dry cotton-blend with pouch pockets, contrast collar, and covered zipper closure

<b>Made in</b> China	<b>Delivery</b> Oct-Nov	<b>Style No.</b> LDM610154	<b>Size set</b> XS - XXL
-------------------------	----------------------------	-------------------------------	-----------------------------



**Nash Wool Hybrid Jacket 3.0 - Black**

**Quality** 60% Recycled polyester - 40% Wool

Workwear jacket in heavy wool blend twill with flap pockets at front and button closure

<b>Made in</b> China	<b>Delivery</b> Oct-Nov	<b>Style No.</b> LDM610169	<b>Size set</b> XS - XXL
-------------------------	----------------------------	-------------------------------	-----------------------------



**Nash Wool Hybrid Jacket 3.0 - Blackberry**

**Quality** 60% Recycled polyester - 40% Wool

Workwear jacket in heavy wool blend twill with flap pockets at front and button closure

<b>Made in</b> China	<b>Delivery</b> Oct-Nov	<b>Style No.</b> LDM610169	<b>Size set</b> XS - XXL
-------------------------	----------------------------	-------------------------------	-----------------------------



**Marchall Corduroy Coach Jacket - Light Desert Sand**

**Quality** 100% Cotton

Short jacket in 8 wale cotton corduroy with classic pasple pockets and button cuffs - matches Kody Heavy Corduroy Pants  
The jacket has a coating to make it water repellent

<b>Made in</b> China	<b>Delivery</b> Oct-Nov	<b>Style No.</b> LDM610172	<b>Size set</b> XS - XXL
-------------------------	----------------------------	-------------------------------	-----------------------------



**Marchall Corduroy Coach Jacket - Rosin**

**Quality** 100% Cotton

Short jacket in 8 wale cotton corduroy with classic pasple pockets and button cuffs - matches Kody Heavy Corduroy Pants  
The jacket has a coating to make it water repellent

<b>Made in</b> China	<b>Delivery</b> Oct-Nov	<b>Style No.</b> LDM610172	<b>Size set</b> XS - XXL
-------------------------	----------------------------	-------------------------------	-----------------------------



**Noel Jacquard Coach Jacket - Chive Green/Dark Ochre**

**Quality** 48% Cotton - 26% Polyester - 16% Acrylic - 4% Other Fibres - 3% Wool - 3% Polyamide

Coach jacket in jacquard fabric made in Italy with with shirt collar and hidden zipper closure at front. The jacket has classic style pasple pockets and button at cuffs

Made in	Delivery	Style No.	Size set
Turkey	Oct-Nov	LDM610176	XS - XXL

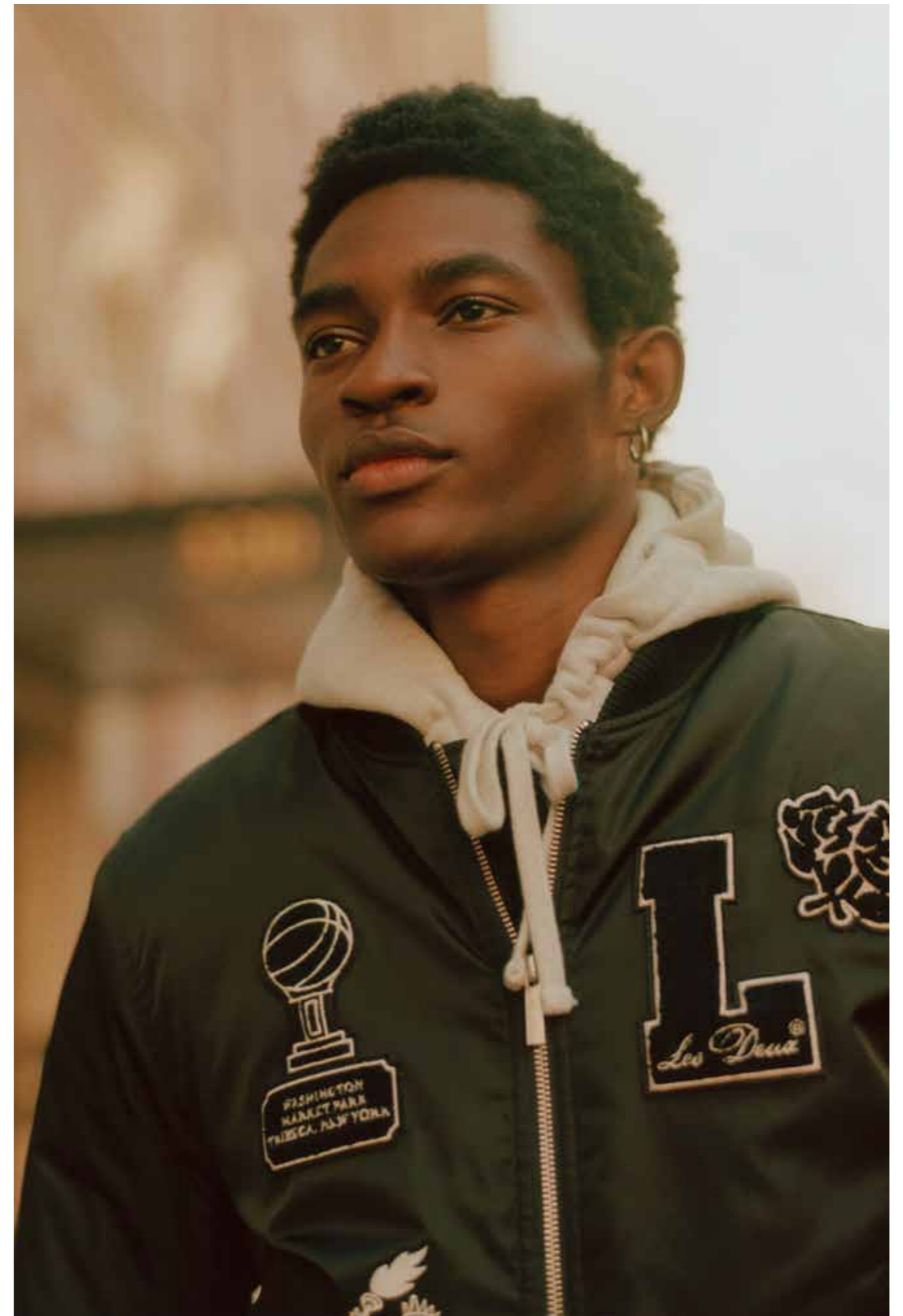


**Neo Varsity Bomber Jacket - Black**

**Quality** 50% Recycled Polyamide - 50% Polyamide

Varsity bomber jacket in shiny heavy polyamide twill with seasonal Les Deux varsity patches. Made with quilted lining and zipper closure at front

Made in	Delivery	Style No.	Size set
China	Oct-Nov	LDM610174	XS - XXL







**Como Coach Wool Jacket - Bungee Cord Mélange**

**Quality** 50% Wool - 50% Recycled Polyester

Coach jacket in light weight wool blend material, shirt collar and zipper closure - comes with matching pants

<b>Made in</b> China	<b>Delivery</b> Oct-Nov	<b>Style No.</b> LDM610171	<b>Size set</b> XS - XXL
-------------------------	----------------------------	-------------------------------	-----------------------------



**Como Coach Wool Jacket - Black**

**Quality** 50% Wool - 50% Recycled Polyester

Coach jacket in light weight wool blend material, shirt collar and zipper closure - comes with matching pants

<b>Made in</b> China	<b>Delivery</b> Oct-Nov	<b>Style No.</b> LDM610171	<b>Size set</b> XS - XXL
-------------------------	----------------------------	-------------------------------	-----------------------------



**Mason Reg Bomber Jacket - Brown Minicheck**

**Quality** 49% Viscose - 29% Polyester - 20%Wool - 2% Elastane

Classic bomber jacket in light weight wool blend material, catalina collar and zipper closure - comes with matching pants

<b>Made in</b> China	<b>Delivery</b> Oct-Nov	<b>Style No.</b> LDM610175	<b>Size set</b> XS - XXL
-------------------------	----------------------------	-------------------------------	-----------------------------



**Mason Reg Bomber Jacket - Grey Check**

**Quality** 49% Viscose - 29% Polyester - 20%Wool - 2% Elastane

Classic bomber jacket in light weight wool blend material, catalina collar and zipper closure - comes with matching pants

<b>Made in</b> China	<b>Delivery</b> Oct-Nov	<b>Style No.</b> LDM610175	<b>Size set</b> XS - XXL
-------------------------	----------------------------	-------------------------------	-----------------------------



**Marseille Hybrid Jacket - Black**

**Quality** 63% Polyester - 32% Viscose - 5% Elastane  
 Shirt jacket in stretchy poly-blend twill with chest pockets and button cuffs.  
 Matches NOOS Como Suit Pants

<b>Made in</b> Turkey	<b>Delivery</b> Oct-Nov	<b>Style No.</b> LDM610170	<b>Size set</b> XS - XXL
--------------------------	----------------------------	-------------------------------	-----------------------------



**Marseille Hybrid Jacket - Navy**

**Quality** 63% Polyester - 32% Viscose - 5% Elastane  
 Shirt jacket in stretchy poly-blend twill with chest pockets and button cuffs.  
 Matches NOOS Como Suit Pants

<b>Made in</b> Turkey	<b>Delivery</b> Oct-Nov	<b>Style No.</b> LDM610170	<b>Size set</b> XS - XXL
--------------------------	----------------------------	-------------------------------	-----------------------------



**Como Reg Herringbone Bomber Jacket - Dark Navy/Dark Grey Mélange**

**Quality** 63% Recycled Polyester - 32% Viscose - 5% Elastane  
 Bomber jacket in stretchable poly-blend in a tonal herringbone weave with catalina collar and button cuffs - comes with matching pants

<b>Made in</b> Turkey	<b>Delivery</b> Oct-Nov	<b>Style No.</b> LDM610168	<b>Size set</b> XS - XXL
--------------------------	----------------------------	-------------------------------	-----------------------------



**Como Reg Herringbone Bomber Jacket - Charcoal/Grey Mélange**

**Quality** 63% Recycled Polyester - 32% Viscose - 5% Elastane  
 Bomber jacket in stretchable poly-blend in a tonal herringbone weave with catalina collar and button cuffs - comes with matching pants

<b>Made in</b> Turkey	<b>Delivery</b> Oct-Nov	<b>Style No.</b> LDM610168	<b>Size set</b> XS - XXL
--------------------------	----------------------------	-------------------------------	-----------------------------



**Marseille Hybrid Jacket - Grey Mélange**

**Quality** 63% Polyester - 32% Viscose - 5% Elastane  
 Shirt jacket in stretchy poly-blend twill with chest pockets and button cuffs.  
 Matches NOOS Como Suit Pants

<b>Made in</b> Turkey	<b>Delivery</b> Oct-Nov	<b>Style No.</b> LDM610170	<b>Size set</b> XS - XXL
--------------------------	----------------------------	-------------------------------	-----------------------------





VESTS



**Martin Vest - Black**

**Quality** 100% Polyamide

Padded liner vest with vertical quilting and tonal snap buttons at front

<b>Made in</b> China	<b>Delivery</b> Oct-Nov	<b>Style No.</b> LDM630032	<b>Size set</b> XS - XXL
-------------------------	----------------------------	-------------------------------	-----------------------------



**Martin Vest - Chive Green**

**Quality** 100% Polyamide

Padded liner vest with vertical quilting and tonal snap buttons at front

<b>Made in</b> China	<b>Delivery</b> Oct-Nov	<b>Style No.</b> LDM630032	<b>Size set</b> XS - XXL
-------------------------	----------------------------	-------------------------------	-----------------------------



**Newport Padded Vest - Dark Navy**

**Quality** 100% Recycled Polyester

Lightweight, water repellent, padded vest with elastic edge tape and zipper at front and pockets

<b>Made in</b> China	<b>Delivery</b> Oct-Nov	<b>Style No.</b> LDM630029	<b>Size set</b> XS - XXL
-------------------------	----------------------------	-------------------------------	-----------------------------



**Newport Padded Vest - Arabian Spice**

**Quality** 100% Recycled Polyester

Lightweight, water repellent, padded vest with elastic edge tape and zipper at front and pockets

<b>Made in</b> China	<b>Delivery</b> Oct-Nov	<b>Style No.</b> LDM630029	<b>Size set</b> XS - XXL
-------------------------	----------------------------	-------------------------------	-----------------------------





**OVERSHIRTS**



#### Kaleb Overshirt - Ivory

**Quality** 60% Viscose - 40% Wool

Comfortable wool blend bouclé overshirt made in Italian fabric with chest pocket and bone look buttons

Made in	Delivery	Style No.	Size set
China	Oct-Nov	LDM640114	XS - XXL



#### Kaleb Overshirt - Arabian Spice

**Quality** 60% Viscose - 40% Wool

Comfortable wool blend bouclé overshirt made in Italian fabric with chest pocket and bone look buttons

Made in	Delivery	Style No.	Size set
China	Oct-Nov	LDM640114	XS - XXL



#### Journey Embroidery Overshirt - Ivory

**Quality** 100% Cotton

Soft peached cotton overshirt with workwear style pockets and a large seasonal logo embroidery on the back. The style also has bone look buttons and a tonal logo embroidery on the front

Made in	Delivery	Style No.	Size set
China	Oct-Nov	LDM640120	XS - XXL



#### Kaleb Overshirt - Dark Navy

**Quality** 60% Viscose - 40% Wool

Comfortable wool blend bouclé overshirt made in Italian fabric with chest pocket and bone look buttons

Made in	Delivery	Style No.	Size set
China	Oct-Nov	LDM640114	XS - XXL



#### Journey Embroidery Overshirt - Dark Navy

**Quality** 100% Cotton

Soft peached cotton overshirt with workwear style pockets and a large seasonal logo embroidery on the back. The style also has bone look buttons and a tonal logo embroidery on the front

Made in	Delivery	Style No.	Size set
China	Oct-Nov	LDM640120	XS - XXL





#### Lennon Flannel Check Overshirt - Ivory/Rosin

**Quality** 100% Cotton

Casual overshirt in a dry cotton check flannel with chest flap pockets

<b>Made in</b>	<b>Delivery</b>	<b>Style No.</b>	<b>Size set</b>
China	Oct-Nov	LDM410199	XS - XXL



#### Lennon Flannel Check Overshirt - Rosin/Dark Navy

**Quality** 100% Cotton

Casual overshirt in a dry cotton check flannel with chest flap pockets

<b>Made in</b>	<b>Delivery</b>	<b>Style No.</b>	<b>Size set</b>
China	Oct-Nov	LDM410199	XS - XXL



#### Kody Heavy Corduroy Overshirt - Light Desert Sand

**Quality** 100% Cotton

Overshirt in heavy 8 wale cotton corduroy with chest flap pockets and bone look buttons

<b>Made in</b>	<b>Delivery</b>	<b>Style No.</b>	<b>Size set</b>
China	Oct-Nov	LDM640063	XS - XXL



#### Kody Heavy Corduroy Overshirt - Rosin

**Quality** 100% Cotton

Overshirt in heavy 8 wale cotton corduroy with chest flap pockets and bone look buttons

<b>Made in</b>	<b>Delivery</b>	<b>Style No.</b>	<b>Size set</b>
China	Oct-Nov	LDM640063	XS - XXL



#### Lennon Flannel Check Overshirt - Chive Green/Blackberry

**Quality** 100% Cotton

Casual overshirt in a dry cotton check flannel with chest flap pockets

<b>Made in</b>	<b>Delivery</b>	<b>Style No.</b>	<b>Size set</b>
China	Oct-Nov	LDM410199	XS - XXL



#### Lennon Flannel Check Overshirt - Dark Sand/Black

**Quality** 100% Cotton

Casual overshirt in a dry cotton check flannel with chest flap pockets

<b>Made in</b>	<b>Delivery</b>	<b>Style No.</b>	<b>Size set</b>
China	Oct-Nov	LDM410199	XS - XXL



#### Kody Heavy Corduroy Overshirt - Blackberry

**Quality** 100% Cotton

Overshirt in heavy 8 wale cotton corduroy with chest flap pockets and bone look buttons

<b>Made in</b>	<b>Delivery</b>	<b>Style No.</b>	<b>Size set</b>
China	Oct-Nov	LDM640063	XS - XXL





**Jaiden Jacquard Overshirt - Rosin/Chive Green**

**Quality** 100% Polyester  
 Shiny flower jacquard overshirt with adjustable cuffs and discrete paspel pockets

Made in	Delivery	Style No.	Size set
China	Oct-Nov	LDM640118	XS - XXL



**Layton AOP Overshirt - Multicolor**

**Quality** 100% Cotton  
 All over printed overshirt in a soft 7 wale corduroy with chest pocket and bone look buttons - comes with matching pants

Made in	Delivery	Style No.	Size set
China	Oct-Nov	LDM640119	XS - XXL



**Karl Flower Shirt 2.0 - Black/Multicolor**

**Quality** 100% Cotton  
 Heavy embroidered shirt in with floral pattern, button-down collar and adjustable buttoned cuffs

Made in	Delivery	Style No.	Size set
China	Oct-Nov	LDM410211	XS - XXL





#### Kaleb Structure Overshirt - Ivory

**Quality** 83% Cotton - 14% Polyester - 3% Other Fibres

Casual overshirt made in structured loose weaved cotton blend material with open chest pocket and classic collar

Made in	Delivery	Style No.	Size set
North Macedonia	Oct-Nov	LDM640122	XS - XXL



#### Kaleb Structure Overshirt - Black

**Quality** 70% Cotton - 25% Polyester - 5% Other Fibres

Casual overshirt made in structured loose weaved cotton blend material with open chest pocket and classic collar

Made in	Delivery	Style No.	Size set
North Macedonia	Oct-Nov	LDM640123	XS - XXL



#### Journey Peached Overshirt - Dark Navy

**Quality** 100% Cotton

Heavy soft moleskin overshirt with workwear style pockets and bone look buttons - comes with matching pants

Made in	Delivery	Style No.	Size set
China	Oct-Nov	LDM640116	XS - XXL



#### Journey Peached Overshirt - Rosin

**Quality** 100% Cotton

Heavy soft moleskin overshirt with workwear style pockets and bone look buttons - comes with matching pants

Made in	Delivery	Style No.	Size set
China	Oct-Nov	LDM640116	XS - XXL



#### Jonathan Check Overshirt - Dark Navy/Oyster Rose

**Quality** 50% Wool - 50% Recycled Polyester

Classic overshirt in a coarse woven check wool blend fabric with adjustable buttoned cuffs and bone look buttons

Made in	Delivery	Style No.	Size set
China	Oct-Nov	LDM640115	XS - XXL



#### Jonathan Check Overshirt - Coffee Brown/Dark Sand

**Quality** 50% Wool - 50% Recycled Polyester

Classic overshirt in a coarse woven check wool blend fabric with adjustable buttoned cuffs and bone look buttons

Made in	Delivery	Style No.	Size set
China	Oct-Nov	LDM640115	XS - XXL





**Jermaine Herringbone Overshirt - Mountain Grey/Ivory**

**Quality** 57% Wool - 23% Polyester - 12% Acrylic - 8% Polyamide  
 Casual overshirt made in loose weaved Italian herringbone wool blend material with open pockets at lower front and classic collar

<b>Made in</b> Turkey	<b>Delivery</b> Oct-Nov	<b>Style No.</b> LDM640117	<b>Size set</b> XS - XXL
--------------------------	----------------------------	-------------------------------	-----------------------------



**Milian Houndstooth Overshirt 2.0 - Warm Sand/Black**

**Quality** 50% Wool - 50% Recycled Polyester  
 Heavy wool overshirt in houndstooth style pattern with chest pockets and bone look buttons

<b>Made in</b> China	<b>Delivery</b> Oct-Nov	<b>Style No.</b> LDM640121	<b>Size set</b> XS - XXL
-------------------------	----------------------------	-------------------------------	-----------------------------



**Jermaine Overshirt - Pine Green/Red Clay**

**Quality** 40% Recycled Polyester - 40% Polyester - 20% Wool  
 Simple style overshirt in bright colors - made in a thick, but lightweight wool blend material

<b>Made in</b> China	<b>Delivery</b> Oct-Nov	<b>Style No.</b> LDM640110	<b>Size set</b> XS - XXL
-------------------------	----------------------------	-------------------------------	-----------------------------



**Jermaine Overshirt - Pine Green/Red Clay**

**Quality** 40% Recycled Polyester - 40% Polyester - 20% Wool  
 Simple style overshirt in bright colors - made in a thick, but lightweight wool blend material

<b>Made in</b> China	<b>Delivery</b> Oct-Nov	<b>Style No.</b> LDM640110	<b>Size set</b> XS - XXL
-------------------------	----------------------------	-------------------------------	-----------------------------





SHIRTS



#### Desert Shirt - Charcoal Mélange

**Quality** 100% Cotton

Slim fitted soft brushed cotton mélange shirt with button-down collar and tonal logo embroidered on chest

<b>Made in</b>	<b>Delivery</b>	<b>Style No.</b>	<b>Size set</b>
Turkey	Oct-Nov	LDM410202	XS - XXL



#### Desert Shirt - Olive Night Mélange

**Quality** 100% Cotton

Slim fitted soft brushed cotton mélange shirt with button-down collar and tonal logo embroidered on chest

<b>Made in</b>	<b>Delivery</b>	<b>Style No.</b>	<b>Size set</b>
Turkey	Oct-Nov	LDM410202	XS - XXL



#### Desert Reg Shirt - Charcoal Mélange

**Quality** 100% Cotton

Soft brushed cotton mélange shirt with button-down collar and tonal logo embroidered on chest

<b>Made in</b>	<b>Delivery</b>	<b>Style No.</b>	<b>Size set</b>
Turkey	Oct-Nov	LDM410169	XS - XXL



#### Desert Reg Shirt - Olive Night Mélange

**Quality** 100% Cotton

Soft brushed cotton mélange shirt with button-down collar and tonal logo embroidered on chest

<b>Made in</b>	<b>Delivery</b>	<b>Style No.</b>	<b>Size set</b>
Turkey	Oct-Nov	LDM410169	XS - XXL



#### Desert Shirt - Arabian Spice Mélange

**Quality** 100% Cotton

Slim fitted soft brushed cotton mélange shirt with button-down collar and tonal logo embroidered on chest

<b>Made in</b>	<b>Delivery</b>	<b>Style No.</b>	<b>Size set</b>
Turkey	Oct-Nov	LDM410202	XS - XXL



#### Desert Shirt - Light Desert Sand Mélange

**Quality** 100% Cotton

Slim fitted soft brushed cotton mélange shirt with button-down collar and tonal logo embroidered on chest

<b>Made in</b>	<b>Delivery</b>	<b>Style No.</b>	<b>Size set</b>
Turkey	Oct-Nov	LDM410202	XS - XXL



#### Desert Reg Shirt - Arabian Spice Mélange

**Quality** 100% Cotton

Soft brushed cotton mélange shirt with button-down collar and tonal logo embroidered on chest

<b>Made in</b>	<b>Delivery</b>	<b>Style No.</b>	<b>Size set</b>
Turkey	Oct-Nov	LDM410169	XS - XXL



#### Desert Reg Shirt - Light Desert Sand Mélange

**Quality** 100% Cotton

Soft brushed cotton mélange shirt with button-down collar and tonal logo embroidered on chest

<b>Made in</b>	<b>Delivery</b>	<b>Style No.</b>	<b>Size set</b>
Turkey	Oct-Nov	LDM410169	XS - XXL



#### Karl AOP Shirt 2.0 - Ivory/Grey

**Quality** 100% Cotton

Casual fitted textured shirt with seasonal all over print in greytones

Made in	Delivery	Style No.	Size set
India	Oct-Nov	LDM410210	XS - XXL



#### Karl AOP Shirt 2.0 - Ivory/Arabian Spice

**Quality** 100% Cotton

Casual fitted textured shirt with seasonal all over print in bright colors

Made in	Delivery	Style No.	Size set
India	Oct-Nov	LDM410210	XS - XXL



#### Kent Oxford Shirt 2.0 - White

**Quality** 100% Cotton

Casual fitted oxford shirt with small flower logo embroidery at chest and classic button-down collar

Made in	Delivery	Style No.	Size set
North Macedonia	Oct-Nov	LDM410205	XS - XXL



#### Kent Oxford Shirt 2.0 - Light Blue/White

**Quality** 100% Cotton

Casual fitted oxford shirt with small flower logo embroidery at chest and classic button-down collar

Made in	Delivery	Style No.	Size set
North Macedonia	Oct-Nov	LDM410205	XS - XXL



#### Kent Oxford Shirt 2.0 - Light Blue

**Quality** 100% Cotton

Casual fitted oxford shirt with small flower logo embroidery at chest and classic button-down collar

Made in	Delivery	Style No.	Size set
North Macedonia	Oct-Nov	LDM410205	XS - XXL



#### Kent Oxford Shirt 2.0 - Dark Navy

**Quality** 100% Cotton

Casual fitted oxford shirt with small flower logo embroidery at chest and classic button-down collar

Made in	Delivery	Style No.	Size set
North Macedonia	Oct-Nov	LDM410205	XS - XXL





#### Kash Shirt - Black

**Quality** 100% Cotton

Relaxed shirt in textured cotton, with classic collar and chest pocket

Made in	Delivery	Style No.	Size set
India	Oct-Nov	LDM410208	XS - XXL



#### Kash Shirt - Bungee Cord

**Quality** 100% Cotton

Relaxed shirt in textured cotton, with classic collar and chest pocket

Made in	Delivery	Style No.	Size set
India	Oct-Nov	LDM410208	XS - XXL



#### Kolton AOE Shirt 2.0 - Chive Green/Dark Ochre

**Quality** 100% Cotton

Casual shirt in lightweight cotton poplin with all over embroidery

Made in	Delivery	Style No.	Size set
China	Oct-Nov	LDM410207	XS - XXL



#### Kolton AOE Shirt 2.0 - Ivory/Walnut

**Quality** 100% Cotton

Casual shirt in lightweight cotton poplin with all over embroidery

Made in	Delivery	Style No.	Size set
China	Oct-Nov	LDM410207	XS - XXL



#### Karl Peached Shirt - Dark Navy

**Quality** 100% Cotton

Casual shirt in a heavy peached cotton with chest pocket and button down collar

Made in	Delivery	Style No.	Size set
Turkey	Oct-Nov	LDM410212	XS - XXL



#### Karl Peached Shirt - Rosin

**Quality** 100% Cotton

Casual shirt in a heavy peached cotton with chest pocket and button down collar

Made in	Delivery	Style No.	Size set
Turkey	Oct-Nov	LDM410212	XS - XXL



#### Kent Stripe Peached Poplin Shirt - White/Vintage Green

**Quality** 100% Cotton

Casual shirt in lightweight peached poplin with chest pocket and button down collar

Made in	Delivery	Style No.	Size set
China	Oct-Nov	LDM410206	XS - XXL



#### Kent Stripe Peached Poplin Shirt - Bel Air Blue/Oyster Rose

**Quality** 100% Cotton

Casual shirt in lightweight peached poplin with chest pocket and button down collar

Made in	Delivery	Style No.	Size set
China	Oct-Nov	LDM410206	XS - XXL





#### Kent Check Shirt 2.0 - Ivory/Light Grey Melange

**Quality** 100% Cotton

Casual check shirt in lightweight cotton flannel with chest pocket and neat button-down collar

<b>Made in</b>	<b>Delivery</b>	<b>Style No.</b>	<b>Size set</b>
China	Oct-Nov	LDM410186	XS - XXL



#### Kent Check Shirt 2.0 - Rosin/Dark Navy

**Quality** 100% Cotton

Casual check shirt in lightweight cotton flannel with chest pocket and neat button-down collar

<b>Made in</b>	<b>Delivery</b>	<b>Style No.</b>	<b>Size set</b>
China	Oct-Nov	LDM410186	XS - XXL



#### Kolton Herringbone Poplin Shirt - White/Bel Air Blue

**Quality** 100% Cotton

Casual shirt in lightweight cotton herringbone poplin with chest pocket and button down collar

<b>Made in</b>	<b>Delivery</b>	<b>Style No.</b>	<b>Size set</b>
China	Oct-Nov	LDM410209	XS - XXL



#### Kolton Herringbone Poplin Shirt - White/Chive Green

**Quality** 100% Cotton

Casual shirt in lightweight cotton herringbone poplin with chest pocket and button down collar

<b>Made in</b>	<b>Delivery</b>	<b>Style No.</b>	<b>Size set</b>
China	Oct-Nov	LDM410209	XS - XXL



#### Kent Check Shirt 2.0 - Desert Taupe/Arabian Spice

**Quality** 100% Cotton

Casual check shirt in lightweight cotton flannel with chest pocket and neat button-down collar

<b>Made in</b>	<b>Delivery</b>	<b>Style No.</b>	<b>Size set</b>
China	Oct-Nov	LDM410186	XS - XXL





#### Konrad Oxford Shirt - White

**Quality** 98% Cotton - 2% Elastane

Casual Oxford shirt in cotton with comfort stretch, button-down collar and tonal logo embroidered on chest

<b>Made in</b>	<b>Delivery</b>	<b>Style No.</b>	<b>Size set</b>
Turkey	Oct-Nov	LDM410193	XS - XXL



#### Konrad Oxford Shirt - Summer Sky

**Quality** 98% Cotton - 2% Elastane

Casual Oxford shirt in cotton with comfort stretch, button-down collar and tonal logo embroidered on chest

<b>Made in</b>	<b>Delivery</b>	<b>Style No.</b>	<b>Size set</b>
Turkey	Oct-Nov	LDM410193	XS - XXL



#### Konrad Contrast Oxford Shirt - White

**Quality** 98% Cotton - 2% Elastane

Casual Oxford shirt in cotton with comfort stretch, button-down collar and contrast logo embroidered on chest

<b>Made in</b>	<b>Delivery</b>	<b>Style No.</b>	<b>Size set</b>
Turkey	Oct-Nov	LDM410195	XS - XXL



#### Konrad Contrast Oxford Shirt - Summer Sky

**Quality** 98% Cotton - 2% Elastane

Casual Oxford shirt in cotton with comfort stretch, button-down collar and contrast logo embroidered on chest

<b>Made in</b>	<b>Delivery</b>	<b>Style No.</b>	<b>Size set</b>
Turkey	Oct-Nov	LDM410195	XS - XXL



#### Konrad Oxford Shirt - Summer Sky/White

**Quality** 98% Cotton - 2% Elastane

Casual Oxford shirt in cotton with comfort stretch, button-down collar and tonal logo embroidered on chest

<b>Made in</b>	<b>Delivery</b>	<b>Style No.</b>	<b>Size set</b>
Turkey	Oct-Nov	LDM410193	XS - XXL



#### Konrad Contrast Oxford Shirt - Summer Sky/White

**Quality** 98% Cotton - 2% Elastane

Casual Oxford shirt in cotton with comfort stretch, button-down collar and contrast logo embroidered on chest

<b>Made in</b>	<b>Delivery</b>	<b>Style No.</b>	<b>Size set</b>
Turkey	Oct-Nov	LDM410195	XS - XXL



#### Konrad Oxford Shirt - Dark Navy

**Quality** 98% Cotton - 2% Elastane

Casual Oxford shirt in cotton with comfort stretch, button-down collar and tonal logo embroidered on chest

<b>Made in</b>	<b>Delivery</b>	<b>Style No.</b>	<b>Size set</b>
Turkey	Oct-Nov	LDM410194	XS - XXL



#### Konrad Oxford Shirt - Rosin

**Quality** 98% Cotton - 2% Elastane

Casual Oxford shirt in cotton with comfort stretch, button-down collar and tonal logo embroidered on chest

<b>Made in</b>	<b>Delivery</b>	<b>Style No.</b>	<b>Size set</b>
Turkey	Oct-Nov	LDM410194	XS - XXL



#### Konrad Stripe Oxford Shirt - Light Ivory/Rosin

**Quality** 98% Cotton - 2% Elastane

Casual Oxford shirt in classic stripe pattern cotton with comfort stretch, button-down collar and tonal logo embroidered on chest

<b>Made in</b>	<b>Delivery</b>	<b>Style No.</b>	<b>Size set</b>
Turkey	Oct-Nov	LDM410196	XS - XXL



#### Konrad Stripe Oxford Shirt - Light Ivory/Light Desert Sand

**Quality** 98% Cotton - 2% Elastane

Casual Oxford shirt in classic stripe pattern cotton with comfort stretch, button-down collar and tonal logo embroidered on chest

<b>Made in</b>	<b>Delivery</b>	<b>Style No.</b>	<b>Size set</b>
Turkey	Oct-Nov	LDM410196	XS - XXL



#### Konrad Oxford Shirt - Oyster Rose

**Quality** 98% Cotton - 2% Elastane

Casual Oxford shirt in cotton with comfort stretch, button-down collar and tonal logo embroidered on chest

<b>Made in</b>	<b>Delivery</b>	<b>Style No.</b>	<b>Size set</b>
Turkey	Oct-Nov	LDM410194	XS - XXL



#### Konrad Oxford Shirt - Light Desert Sand

**Quality** 98% Cotton - 2% Elastane

Casual Oxford shirt in cotton with comfort stretch, button-down collar and tonal logo embroidered on chest

<b>Made in</b>	<b>Delivery</b>	<b>Style No.</b>	<b>Size set</b>
Turkey	Oct-Nov	LDM410194	XS - XXL





**KNIT**



**Eddie Wool Rib Rollneck Knit - Arabian Spice**

**Quality** 100% Merino Wool  
Rollneck sweater in a ribbed heavy merino wool knit

<b>Made in</b> China	<b>Delivery</b> Oct-Nov	<b>Style No.</b> LDM310047	<b>Size set</b> XS - XXL
-------------------------	----------------------------	-------------------------------	-----------------------------



**Eddie Wool Rib Rollneck Knit - Dark Navy**

**Quality** 100% Merino Wool  
Rollneck sweater in a ribbed heavy merino wool knit

<b>Made in</b> China	<b>Delivery</b> Oct-Nov	<b>Style No.</b> LDM310047	<b>Size set</b> XS - XXL
-------------------------	----------------------------	-------------------------------	-----------------------------



**Finnegan Knit Shirt - Arabian Spice**

**Quality** 100% Wool  
Soft knitted wool overshirt in herringbone knit pattern with classic collar and bone look buttons

<b>Made in</b> China	<b>Delivery</b> Oct-Nov	<b>Style No.</b> LDM410185	<b>Size set</b> XS - XXL
-------------------------	----------------------------	-------------------------------	-----------------------------



**Finnegan Knit Shirt - Dark Navy**

**Quality** 100% Wool  
Soft knitted wool overshirt in herringbone knit pattern with classic collar and bone look buttons

<b>Made in</b> China	<b>Delivery</b> Oct-Nov	<b>Style No.</b> LDM410185	<b>Size set</b> XS - XXL
-------------------------	----------------------------	-------------------------------	-----------------------------







**Felipe Knit - Ivory/Light Desert Sand**

**Quality** 79% Wool - 20% Polyamide - 1% Alpaca  
 O-neck sweater in soft wool with logo flower in hairy jacquard at the front

<b>Made in</b> China	<b>Delivery</b> Oct-Nov	<b>Style No.</b> LDM310135	<b>Size set</b> XS - XXL
-------------------------	----------------------------	-------------------------------	-----------------------------



**Elliot Crewneck Knit - Chive Green/Blackberry**

**Quality** 79% Wool - 20% Polyamide - 1% Alpaca  
 O-neck sweater in soft wool with cursive Les Deux logo in contrast color jacquard at the front

<b>Made in</b> China	<b>Delivery</b> Oct-Nov	<b>Style No.</b> LDM310149	<b>Size set</b> XS - XXL
-------------------------	----------------------------	-------------------------------	-----------------------------



**Gilbert Roundneck Knit - Oyster Rose Mélange**

**Quality** 42% Wool - 40% Polyamide - 16% Mohair - 2% Elastane  
 Fuzzy o-neck knit in soft wool-mohair blend in marvellous seasonal melange colors

<b>Made in</b> China	<b>Delivery</b> Oct-Nov	<b>Style No.</b> LDM310150	<b>Size set</b> XS - XXL
-------------------------	----------------------------	-------------------------------	-----------------------------



**Gilbert Roundneck Knit - Light Grey Mélange**

**Quality** 42% Wool - 40% Polyamide - 16% Mohair - 2% Elastane  
 Fuzzy o-neck knit in soft wool-mohair blend in marvellous seasonal melange colors

<b>Made in</b> China	<b>Delivery</b> Oct-Nov	<b>Style No.</b> LDM310150	<b>Size set</b> XS - XXL
-------------------------	----------------------------	-------------------------------	-----------------------------



**Fischer Milano Overshirt - Light Desert Sand Mélange**

**Quality** 100% Merino Wool  
 Heavy knitted overshirt in Milano knit technique with classic collar, patch pockets and bone look buttons

<b>Made in</b> China	<b>Delivery</b> Oct-Nov	<b>Style No.</b> LDM310136	<b>Size set</b> XS - XXL
-------------------------	----------------------------	-------------------------------	-----------------------------



**Gilbert Roundneck Knit - Bungee Cord Mélange**

**Quality** 42% Wool - 40% Polyamide - 16% Mohair - 2% Elastane  
 Fuzzy o-neck knit in soft wool-mohair blend in marvellous seasonal melange colors

<b>Made in</b> China	<b>Delivery</b> Oct-Nov	<b>Style No.</b> LDM310150	<b>Size set</b> XS - XXL
-------------------------	----------------------------	-------------------------------	-----------------------------



**Grady Waffle Mockneck Knit - Ivory**

**Quality** 80% Lambswool - 20% Polyamide

Knitted sweater in soft wool blend with mockneck collar and classic waffle knit pattern all over

<b>Made in</b>	<b>Delivery</b>	<b>Style No.</b>	<b>Size set</b>
China	Oct-Nov	LDM310145	XS - XXL



**Grady Waffle Mockneck Knit - Dark Navy**

**Quality** 80% Lambswool - 20% Polyamide

Knitted sweater in soft wool blend with mockneck collar and classic waffle knit pattern all over

<b>Made in</b>	<b>Delivery</b>	<b>Style No.</b>	<b>Size set</b>
China	Oct-Nov	LDM310145	XS - XXL



**Grady Waffle Cardigan - Ivory**

**Quality** 80% Lambswool - 20% Polyamide

Knitted cardigan in soft wool blend with mockneck collar and classic waffle knit pattern all over

<b>Made in</b>	<b>Delivery</b>	<b>Style No.</b>	<b>Size set</b>
China	Oct-Nov	LDM310147	XS - XXL



**Grady Waffle Cardigan - Dark Navy**

**Quality** 80% Lambswool - 20% Polyamide

Knitted cardigan in soft wool blend with mockneck collar and classic waffle knit pattern all over

<b>Made in</b>	<b>Delivery</b>	<b>Style No.</b>	<b>Size set</b>
China	Oct-Nov	LDM310147	XS - XXL



**Grady Waffle Cardigan - Blackberry**

**Quality** 80% Lambswool - 20% Polyamide

Knitted cardigan in soft wool blend with mockneck collar and classic waffle knit pattern all over

<b>Made in</b>	<b>Delivery</b>	<b>Style No.</b>	<b>Size set</b>
China	Oct-Nov	LDM310147	XS - XXL





**Errol Cotton Roundneck - Light Desert Sand**

**Quality** 100% Cotton  
 Crewneck sweater in structured cotton yarn with embroidered logo in contrast color

<b>Made in</b> China	<b>Delivery</b> Oct-Nov	<b>Style No.</b> LDM310134	<b>Size set</b> XS - XXL
-------------------------	----------------------------	-------------------------------	-----------------------------



**Errol Cotton Roundneck - Blackberry**

**Quality** 100% Cotton  
 Crewneck sweater in structured cotton yarn with embroidered logo in contrast color

<b>Made in</b> China	<b>Delivery</b> Oct-Nov	<b>Style No.</b> LDM310134	<b>Size set</b> XS - XXL
-------------------------	----------------------------	-------------------------------	-----------------------------



**Rolf LS Knitted Zipper Jersey - Rosin/Black**

**Quality** 100% Cotton  
 Soft knitted cotton polo shirt with contrast detail, chainstitch logo at chest and zipper closure

<b>Made in</b> China	<b>Delivery</b> Oct-Nov	<b>Style No.</b> LDM310144	<b>Size set</b> XS - XXL
-------------------------	----------------------------	-------------------------------	-----------------------------



**Errol Cotton Roundneck - Black**

**Quality** 100% Cotton  
 Crewneck sweater in structured cotton yarn with embroidered logo in contrast color

<b>Made in</b> China	<b>Delivery</b> Oct-Nov	<b>Style No.</b> LDM310134	<b>Size set</b> XS - XXL
-------------------------	----------------------------	-------------------------------	-----------------------------



**Hordur Fair Isle Cardigan - Light Desert Sand/Coffee Brown**

**Quality** 100% Wool  
Knitted cardigan in subtle colored classic Fair Isle pattern

**Made in** China    **Delivery** Oct-Nov    **Style No.** LDM310119    **Size set** XS - XXL



**Hordur Fair Isle Slipover - Light Desert Sand/Coffee Brown**

**Quality** 100% Wool  
Knitted in subtle colored classic Fair Isle pattern

**Made in** China    **Delivery** Oct-Nov    **Style No.** LDM310142    **Size set** XS - XXL





**Greyson Merino Knit - Dark Grey Mélange**

**Quality** 100% Merino Wool  
 Roundneck sweater in a lightweight machine washable merino wool from Biella Yarn with tonal logo embroidered at chest

<b>Made in</b> China	<b>Delivery</b> Oct-Nov	<b>Style No.</b> LDM310094	<b>Size set</b> XS - XXL
-------------------------	----------------------------	-------------------------------	-----------------------------



**Greyson Merino Knit - Chive Green**

**Quality** 100% Merino Wool  
 Roundneck sweater in a lightweight machine washable merino wool from Biella Yarn with tonal logo embroidered at chest

<b>Made in</b> China	<b>Delivery</b> Oct-Nov	<b>Style No.</b> LDM310094	<b>Size set</b> XS - XXL
-------------------------	----------------------------	-------------------------------	-----------------------------



**Greyson Merino Knit - Black**

**Quality** 100% Merino Wool  
 Roundneck sweater in a lightweight machine washable merino wool from Biella Yarn with tonal logo embroidered at chest

<b>Made in</b> China	<b>Delivery</b> Oct-Nov	<b>Style No.</b> LDM310094	<b>Size set</b> XS - XXL
-------------------------	----------------------------	-------------------------------	-----------------------------



**Greyson Merino Knit - Dark Navy**

**Quality** 100% Merino Wool  
 Roundneck sweater in a lightweight machine washable merino wool from Biella Yarn with tonal logo embroidered at chest

<b>Made in</b> China	<b>Delivery</b> Oct-Nov	<b>Style No.</b> LDM310094	<b>Size set</b> XS - XXL
-------------------------	----------------------------	-------------------------------	-----------------------------



**Greyson Merino Knit - Dark Sand Mélange**

**Quality** 100% Merino Wool  
 Roundneck sweater in a lightweight machine washable merino wool from Biella Yarn with tonal logo embroidered at chest

<b>Made in</b> China	<b>Delivery</b> Oct-Nov	<b>Style No.</b> LDM310094	<b>Size set</b> XS - XXL
-------------------------	----------------------------	-------------------------------	-----------------------------





**Greyson Half-Zip Merino Knit - Dark Grey Mélange**

**Quality** 100% Merino Wool

Half-zip sweater in a lightweight machine washable merino wool from Biella Yarn with tonal logo embroidered at chest

<b>Made in</b>	<b>Delivery</b>	<b>Style No.</b>	<b>Size set</b>
China	Oct-Nov	LDM310115	XS - XXL



**Greyson Half-Zip Merino Knit - Chive Green**

**Quality** 100% Merino Wool

Half-zip sweater in a lightweight machine washable merino wool from Biella Yarn with tonal logo embroidered at chest

<b>Made in</b>	<b>Delivery</b>	<b>Style No.</b>	<b>Size set</b>
China	Oct-Nov	LDM310115	XS - XXL



**Greyson Half-Zip Merino Knit - Black**

**Quality** 100% Merino Wool

Half-zip sweater in a lightweight machine washable merino wool from Biella Yarn with tonal logo embroidered at chest

<b>Made in</b>	<b>Delivery</b>	<b>Style No.</b>	<b>Size set</b>
China	Oct-Nov	LDM310115	XS - XXL



**Greyson Half-Zip Merino Knit - Dark Navy**

**Quality** 100% Merino Wool

Half-zip sweater in a lightweight machine washable merino wool from Biella Yarn with tonal logo embroidered at chest

<b>Made in</b>	<b>Delivery</b>	<b>Style No.</b>	<b>Size set</b>
China	Oct-Nov	LDM310115	XS - XXL



**Greyson Half-Zip Merino Knit - Dark Sand Mélange**

**Quality** 100% Merino Wool

Half-zip sweater in a lightweight machine washable merino wool from Biella Yarn with tonal logo embroidered at chest

<b>Made in</b>	<b>Delivery</b>	<b>Style No.</b>	<b>Size set</b>
China	Oct-Nov	LDM310115	XS - XXL



**Greyson Rollneck Merino Knit - Dark Grey Mélange**

**Quality** 100% Merino Wool

Rollneck sweater in a lightweight machine washable merino wool from Biella Yarn with tonal logo embroidered at chest

<b>Made in</b>	<b>Delivery</b>	<b>Style No.</b>	<b>Size set</b>
China	Oct-Nov	LDM310114	XS - XXL



**Greyson Rollneck Merino Knit - Chive Green**

**Quality** 100% Merino Wool

Rollneck sweater in a lightweight machine washable merino wool from Biella Yarn with tonal logo embroidered at chest

<b>Made in</b>	<b>Delivery</b>	<b>Style No.</b>	<b>Size set</b>
China	Oct-Nov	LDM310114	XS - XXL



**Greyson Rollneck Merino Knit - Black**

**Quality** 100% Merino Wool

Rollneck sweater in a lightweight machine washable merino wool from Biella Yarn with tonal logo embroidered at chest

<b>Made in</b>	<b>Delivery</b>	<b>Style No.</b>	<b>Size set</b>
China	Oct-Nov	LDM310114	XS - XXL



**Greyson Rollneck Merino Knit - Dark Navy**

**Quality** 100% Merino Wool

Rollneck sweater in a lightweight machine washable merino wool from Biella Yarn with tonal logo embroidered at chest

<b>Made in</b>	<b>Delivery</b>	<b>Style No.</b>	<b>Size set</b>
China	Oct-Nov	LDM310114	XS - XXL



**Greyson Rollneck Merino Knit - Dark Sand Mélange**

**Quality** 100% Merino Wool

Rollneck sweater in a lightweight machine washable merino wool from Biella Yarn with tonal logo embroidered at chest

<b>Made in</b>	<b>Delivery</b>	<b>Style No.</b>	<b>Size set</b>
China	Oct-Nov	LDM310114	XS - XXL



TRACKSUITS





**Ballier Track Jacket - Blackberry**

**Quality** 92% Recycled Polyester - 8% Elastane  
 Zipper jacket in technical poly-blend with rubber printed logo on chest

Made in	Delivery	Style No.	Size set
China	Oct-Nov	LDM203012	XS - XXL



**Ballier Track Jacket - Rosin**

**Quality** 92% Recycled Polyester - 8% Elastane  
 Zipper jacket in technical poly-blend with rubber printed logo on chest

Made in	Delivery	Style No.	Size set
China	Oct-Nov	LDM203012	XS - XXL



**Ballier Track Pants - Blackberry**

**Quality** 92% Recycled Polyester - 8% Elastane  
 Track pants in technical poly-blend with drawstring waist and sewn pressfolds

Made in	Delivery	Style No.	Size set
China	Oct-Nov	LDM530016	XS - XXL



**Ballier Track Pants - Rosin**

**Quality** 92% Recycled Polyester - 8% Elastane  
 Track pants in technical poly-blend with drawstring waist and sewn pressfolds

Made in	Delivery	Style No.	Size set
China	Oct-Nov	LDM530016	XS - XXL



**Ballier Casual Track Pants - Blackberry**

**Quality** 92% Recycled Polyester - 8% Elastane  
 Relaxed fit track pants in technical poly-blend with drawstring waist and sewn pressfolds

Made in	Delivery	Style No.	Size set
China	Oct-Nov	LDM530049	XS - XXL



**Ballier Casual Track Pants - Rosin**

**Quality** 92% Recycled Polyester - 8% Elastane  
 Relaxed fit track pants in technical poly-blend with drawstring waist and sewn pressfolds

Made in	Delivery	Style No.	Size set
China	Oct-Nov	LDM530049	XS - XXL



**Luke Aop Track Zipper Jacket - Chive Green/Dark Ochre**

**Quality** 50% Recycled Polyester - 50% Polyester

Track jacket in soft fleece with all over print, paspoiled pockets and adjustable elastic hem at waist

<b>Made in</b>	<b>Delivery</b>	<b>Style No.</b>	<b>Size set</b>
China	Oct-Nov	LDM610178	XS - XXL



**Luke AOP Track Pant - Chive Green/Dark Ochre**

**Quality** 50% Recycled Polyester - 50% Polyester

Track pants in soft fleece with all over print and drawstring at waist

<b>Made in</b>	<b>Delivery</b>	<b>Style No.</b>	<b>Size set</b>
China	Oct-Nov	LDM530061	XS - XXL





PANTS





**Como Suit Pants Seasonal - Dark Indigo**

**Quality** 63% Recycled Polyester - 32% Viscose - 5% Elastane  
Cropped suit pants in stretchy poly-blend fabric with formal closure and folded hem

**Made in** Turkey  
**Delivery** Oct-Nov  
**Style No.** LDM501070  
**Size set** W28"-36" L30,32



**Como Suit Pants Seasonal - Light Desert Sand**

**Quality** 63% Recycled Polyester - 32% Viscose - 5% Elastane  
Cropped suit pants in stretchy poly-blend fabric with formal closure and folded hem

**Made in** Turkey  
**Delivery** Oct-Nov  
**Style No.** LDM501070  
**Size set** W28"-36" L30,32



**Patrick Drawstring Pants - Grey Mélange**

**Quality** 63% Polyester - 32% Viscose - 5% Elastane  
Casual pants in classic poly-blend twill with elastic drawstring waist

**Made in** Turkey  
**Delivery** Oct-Nov  
**Style No.** LDM510151  
**Size set** XS - XXL



**Patrick Drawstring Pants - Navy**

**Quality** 63% Polyester - 32% Viscose - 5% Elastane  
Casual pants in classic poly-blend twill with elastic drawstring waist

**Made in** Turkey  
**Delivery** Oct-Nov  
**Style No.** LDM510151  
**Size set** XS - XXL



**Como Reg Suit Pants Seasonal - Dark Indigo**

**Quality** 63% Recycled Polyester - 32% Viscose - 5% Elastane  
Classic suit pants in stretchy poly-blend fabric with formal closure and pressfolds

**Made in** Turkey  
**Delivery** Oct-Nov  
**Style No.** LDM501072  
**Size set** W28"-36" L32,34



**Como Reg Suit Pants Seasonal - Light Desert Sand**

**Quality** 63% Recycled Polyester - 32% Viscose - 5% Elastane  
Classic suit pants in stretchy poly-blend fabric with formal closure and pressfolds

**Made in** Turkey  
**Delivery** Oct-Nov  
**Style No.** LDM501072  
**Size set** W28"-36" L32,34



**Patrick Drawstring Pants - Black**

**Quality** 63% Polyester - 32% Viscose - 5% Elastane  
Casual pants in classic poly-blend twill with elastic drawstring waist

**Made in** Turkey  
**Delivery** Oct-Nov  
**Style No.** LDM510151  
**Size set** XS - XXL



**Como Herringbone Suit Pants - Dark Navy/Dark Grey Mélange**

**Quality** 63% Recycled Polyester - 32% Viscose - 5% Elastane  
Cropped suit pants in poly-blend herringbone fabric with formal closure and folded hem

**Made in** Turkey  
**Delivery** Oct-Nov  
**Style No.** LDM501083  
**Size set** W28"-36" L30,32



**Como Herringbone Suit Pants - Charcoal/Grey Mélange**

**Quality** 63% Recycled Polyester - 32% Viscose - 5% Elastane  
Cropped suit pants in poly-blend herringbone fabric with formal closure and folded hem

**Made in** Turkey  
**Delivery** Oct-Nov  
**Style No.** LDM501083  
**Size set** W28"-36" L30,32



**Como Herringbone Tapered Drawstring Pants - D. Navy/D. Grey Mélange**

**Quality** 63% Recycled Polyester - 32% Viscose - 5% Elastane  
Classic suit pants in stretchy poly-blend herringbone fabric with formal closure and pressfolds

**Made in** Turkey  
**Delivery** Oct-Nov  
**Style No.** LDM501103  
**Size set** W28"-36" L32,34



**Como Herringbone Tapered Drawstring Pants - Charcoal/Grey Mélange**

**Quality** 63% Recycled Polyester - 32% Viscose - 5% Elastane  
Casual pants in poly-blend herringbone fabric with formal closure, elastic waist and drawstring

**Made in** Turkey  
**Delivery** Oct-Nov  
**Style No.** LDM501103  
**Size set** W28"-36" L32,34



**Como Reg Herringbone Suit Pants - Dark Navy/Dark Grey Mélange**

**Quality** 63% Recycled Polyester - 32% Viscose - 5% Elastane  
Classic suit pants in stretchy poly-blend herringbone fabric with formal closure and pressfolds

**Made in** Turkey  
**Delivery** Oct-Nov  
**Style No.** LDM501085  
**Size set** W28"-36" L32,34



**Como Reg Herringbone Suit Pants - Charcoal/Grey Mélange**

**Quality** 63% Recycled Polyester - 32% Viscose - 5% Elastane  
Classic suit pants in stretchy poly-blend herringbone fabric with formal closure and pressfolds

**Made in** Turkey  
**Delivery** Oct-Nov  
**Style No.** LDM501085  
**Size set** W28"-36" L32,34



**Como Reg Wool Suit Pants - Black Mélangé**

**Quality** 50% Wool - 50% Recycled Polyester

Classic suit pants in a brushed wool-blend with formal closure and pressfolds

<b>Made in</b> China	<b>Delivery</b> Oct-Nov	<b>Style No.</b> LDM501093	<b>Size set</b> W28"-36" L32,34
-------------------------	----------------------------	-------------------------------	------------------------------------



**Como Reg Wool Suit Pants - Bungee Cord Mélangé**

**Quality** 50% Wool - 50% Recycled Polyester

Classic suit pants in a brushed wool-blend with formal closure and pressfolds

<b>Made in</b> China	<b>Delivery</b> Oct-Nov	<b>Style No.</b> LDM501093	<b>Size set</b> W28"-36" L32,34
-------------------------	----------------------------	-------------------------------	------------------------------------



**Como Tapered Wool Pants - Black Mélangé**

**Quality** 50% Wool - 50% Recycled Polyester

Casual pants in a brushed wool-blend with formal closure, elastic waist and drawstring

<b>Made in</b> China	<b>Delivery</b> Oct-Nov	<b>Style No.</b> LDM501104	<b>Size set</b> W28"-36" L32,34
-------------------------	----------------------------	-------------------------------	------------------------------------

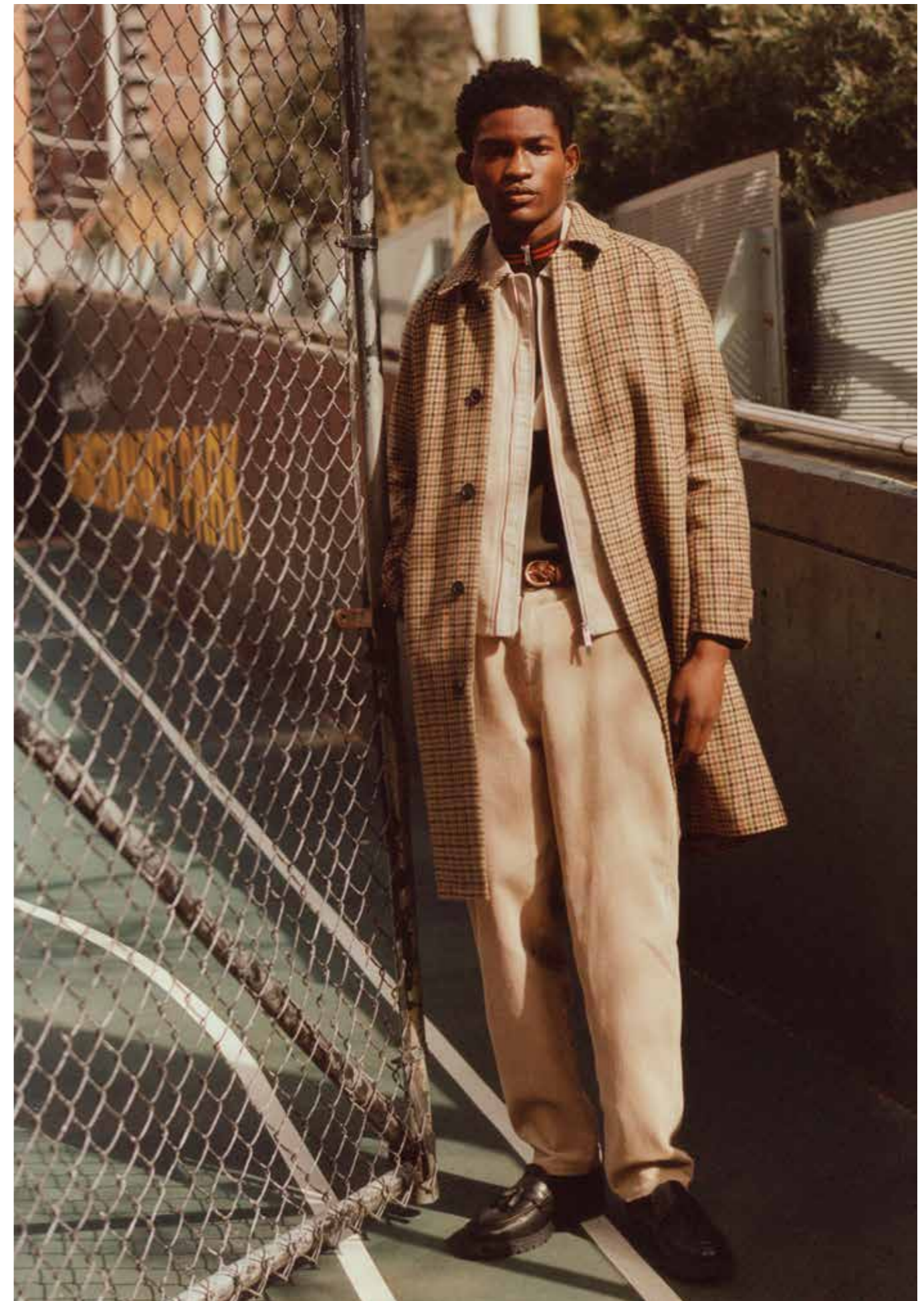


**Como Tapered Wool Pants - Bungee Cord Mélangé**

**Quality** 50% Wool - 50% Recycled Polyester

Casual pants in a brushed wool-blend with formal closure, elastic waist and drawstring

<b>Made in</b> China	<b>Delivery</b> Oct-Nov	<b>Style No.</b> LDM501104	<b>Size set</b> W28"-36" L32,34
-------------------------	----------------------------	-------------------------------	------------------------------------







**Kody Heavy Corduroy Pants - Blackberry**

**Quality** 100% Cotton

Classic chino in heavy 8 wale cotton corduroy with zipper fly and button closure

<b>Made in</b> China	<b>Delivery</b> Oct-Nov	<b>Style No.</b> LDM510095	<b>Size set</b> W28"-36" L32,34
-------------------------	----------------------------	-------------------------------	------------------------------------



**Kody Heavy Corduroy Pants - Light Desert Sand**

**Quality** 100% Cotton

Classic chino in heavy 8 wale cotton corduroy with zipper fly and button closure

<b>Made in</b> China	<b>Delivery</b> Oct-Nov	<b>Style No.</b> LDM510095	<b>Size set</b> W28"-36" L32,34
-------------------------	----------------------------	-------------------------------	------------------------------------



**Kody AOP Pants - Multicolor**

**Quality** 100% Cotton

Classic chino in soft 7 wale cotton corduroy with all over print, zipper fly and button closure

<b>Made in</b> China	<b>Delivery</b> Oct-Nov	<b>Style No.</b> LDM510152	<b>Size set</b> W28"-36" L32,34
-------------------------	----------------------------	-------------------------------	------------------------------------



**Ryder Pants - Ivory**

**Quality** 80% Organic Cotton - 20% Cotton

Relaxed fit 5-pocket jeans in heavy cotton denim with zipper fly and coin pocket

<b>Made in</b> Turkey	<b>Delivery</b> Oct-Nov	<b>Style No.</b> LDM550012	<b>Size set</b> W28"-36" L32,34
--------------------------	----------------------------	-------------------------------	------------------------------------



**Kody Heavy Corduroy Pants - Rosin**

**Quality** 100% Cotton

Classic chino in heavy 8 wale cotton corduroy with zipper fly and button closure

<b>Made in</b> China	<b>Delivery</b> Oct-Nov	<b>Style No.</b> LDM510095	<b>Size set</b> W28"-36" L32,34
-------------------------	----------------------------	-------------------------------	------------------------------------



**Reece Check Pleated Suit Pants 2.0 - Warm Sand/Dark Navy Check**

**Quality** 49% Viscose - 29% Polyester - 20% Wool - 2% Elastane  
Regular fitted formal suit pants with in a soft lightweight wool blend with press-folds and hook and eye closure

<b>Made in</b> China	<b>Delivery</b> Oct-Nov	<b>Style No.</b> LDM510156	<b>Size set</b> W28"-36" L32,34
-------------------------	----------------------------	-------------------------------	------------------------------------



**Reece Check Pleated Suit Pants 2.0 - Grey/Black Check**

**Quality** 49% Viscose - 29% Polyester - 20% Wool - 2% Elastane  
Regular fitted formal suit pants with in a soft lightweight wool blend with pressfolds and hook and eye closure

<b>Made in</b> China	<b>Delivery</b> Oct-Nov	<b>Style No.</b> LDM510156	<b>Size set</b> W28"-36" L32,34
-------------------------	----------------------------	-------------------------------	------------------------------------



**Reece Pleated Suit Pants 2.0 - Dark Navy**

**Quality** 49% Viscose - 29% Polyester - 20% Wool - 2% Elastane  
Regular fitted formal suit pants with in a soft lightweight wool blend with pressfolds and hook and eye closure

<b>Made in</b> China	<b>Delivery</b> Oct-Nov	<b>Style No.</b> LDM510155	<b>Size set</b> W28"-36" L32,34
-------------------------	----------------------------	-------------------------------	------------------------------------



**Reece Twill Pants - Black**

**Quality** 50% Recycled Polyester - 30% Wool - 20% Polyester  
Regular fitted casual pants in a wool blend twill with button closure at front and subtle pockets at sideseam

<b>Made in</b> China	<b>Delivery</b> Oct-Nov	<b>Style No.</b> LDM510153	<b>Size set</b> W28"-36" L32,34
-------------------------	----------------------------	-------------------------------	------------------------------------



**Reece Twill Pants - Bungee Cord**

**Quality** 50% Recycled Polyester - 30% Wool - 20% Polyester  
Regular fitted casual pants in a wool blend twill with button closure at front and subtle pockets at sideseam

<b>Made in</b> China	<b>Delivery</b> Oct-Nov	<b>Style No.</b> LDM510153	<b>Size set</b> W28"-36" L32,34
-------------------------	----------------------------	-------------------------------	------------------------------------



**Reece Peached Pants - Dark Navy**

**Quality** 100% Cotton  
Regular fitted casual pants in heavy brushed cotton twill with button closure at front and subtle pockets at sideseam

<b>Made in</b> China	<b>Delivery</b> Oct-Nov	<b>Style No.</b> LDM510154	<b>Size set</b> W28"-36" L32,34
-------------------------	----------------------------	-------------------------------	------------------------------------



**Reece Peached Pants - Rosin**

**Quality** 100% Cotton  
Regular fitted casual pants in heavy brushed cotton twill with button closure at front and subtle pockets at sideseam

<b>Made in</b> China	<b>Delivery</b> Oct-Nov	<b>Style No.</b> LDM510154	<b>Size set</b> W28"-36" L32,34
-------------------------	----------------------------	-------------------------------	------------------------------------



**Como Reg Cotton Suit Pants - Rosin**

**Quality** 97% Cotton - 3% Elastane  
Classic suit pants in stretchy cotton twill with formal closure and pressfolds

<b>Made in</b> Turkey	<b>Delivery</b> Oct-Nov	<b>Style No.</b> LDM510141	<b>Size set</b> W28"-36" L32,34
--------------------------	----------------------------	-------------------------------	------------------------------------



**Como Reg Cotton Suit Pants - Walnut**

**Quality** 97% Cotton - 3% Elastane  
Classic suit pants in stretchy cotton twill with formal closure and pressfolds

<b>Made in</b> Turkey	<b>Delivery</b> Oct-Nov	<b>Style No.</b> LDM510141	<b>Size set</b> W28"-36" L32,34
--------------------------	----------------------------	-------------------------------	------------------------------------





**HOODIES**



**Ivy League Hoodie - Oatmeal Mélange**

**Quality** 100% Cotton - 450 gsm with unbrushed backside  
 Dry touch cotton hoodie with college inspired logo embroidery and print on chest and kangaroo pocket at front

Made in	Delivery	Style No.	Size set
India	Oct-Nov	LDM202040	XS - XXL



**Ivy League Hoodie - Chive Green**

**Quality** 100% Cotton - 450 gsm with unbrushed backside  
 Dry touch cotton hoodie with college inspired logo embroidery and print on chest and kangaroo pocket at front

Made in	Delivery	Style No.	Size set
India	Oct-Nov	LDM202040	XS - XXL



**Fiore Hoodie - Snow Mélange**

**Quality** 100% Cotton - 550 gsm with unbrushed backside  
 Heavy cotton hoodie with logo and multicolored floral embroidery at the front and kangaroo pocket

Made in	Delivery	Style No.	Size set
India	Oct-Nov	LDM202042	XS - XXL



**Fiore Hoodie - Dark Navy**

**Quality** 100% Cotton - 550 gsm with unbrushed backside  
 Heavy cotton hoodie with logo and multicolored floral embroidery at the front and kangaroo pocket

Made in	Delivery	Style No.	Size set
India	Oct-Nov	LDM202042	XS - XXL



**Ivy League Hoodie - Black**

**Quality** 100% Cotton - 450 gsm with unbrushed backside  
 Dry touch cotton hoodie with college inspired logo embroidery and print on chest and kangaroo pocket at front

Made in	Delivery	Style No.	Size set
India	Oct-Nov	LDM202040	XS - XXL



**Mini Encore Hoodie 2.0 - Rosin/Ivory**

**Quality** 100% Cotton - 400 gsm with brushed backside  
 Soft cotton hoodie with the iconic Les Deux logo printed in small letters at the front chest and kangaroo pocket

Made in	Delivery	Style No.	Size set
Turkey	Oct-Nov	LDM202046	XS - XXL



**Mini Encore Hoodie 2.0 - Dark Sand Mélange/Ivory**

**Quality** 100% Cotton - 400 gsm with brushed backside  
 Soft cotton hoodie with the iconic Les Deux logo printed in small letters at the front chest and kangaroo pocket

Made in	Delivery	Style No.	Size set
Turkey	Oct-Nov	LDM202046	XS - XXL



**Luca Hoodie - Bungee Cord**

**Quality** 100% Cotton - 320 gsm with brushed backside  
Soft brushed hoodie with kangaroo pocket at front and humouristic print and embroidery artwork at the chest and at back - made by Italian artist "My Poster Sucks"

<b>Made in</b> Turkey	<b>Delivery</b> Oct-Nov	<b>Style No.</b> LDM202044	<b>Size set</b> XS - XXL
--------------------------	----------------------------	-------------------------------	-----------------------------



**Tribeca Hoodie - Ivory**

**Quality** 100% Cotton - 320 gsm with brushed backside  
Soft brushed hoodie with logo on sleeve, large backprint and kangaroo pocket at front

<b>Made in</b> Turkey	<b>Delivery</b> Oct-Nov	<b>Style No.</b> LDM202045	<b>Size set</b> XS - XXL
--------------------------	----------------------------	-------------------------------	-----------------------------



**Luca Hoodie - Snow Mélange**

**Quality** 100% Cotton - 320 gsm with brushed backside  
Soft brushed hoodie with kangaroo pocket at front and humouristic print and embroidery artwork at the chest and at back - made by Italian artist "My Poster Sucks"

<b>Made in</b> Turkey	<b>Delivery</b> Oct-Nov	<b>Style No.</b> LDM202044	<b>Size set</b> XS - XXL
--------------------------	----------------------------	-------------------------------	-----------------------------



**Tribeca Hoodie - Rosin**

**Quality** 100% Cotton - 320 gsm with brushed backside  
Soft brushed hoodie with logo on sleeve, large backprint and kangaroo pocket at front

<b>Made in</b> Turkey	<b>Delivery</b> Oct-Nov	<b>Style No.</b> LDM202045	<b>Size set</b> XS - XXL
--------------------------	----------------------------	-------------------------------	-----------------------------





**Crew Hoodie - Ivory/Light Ivory**

**Quality** 100% Cotton - 400 gsm with brushed backside  
 Heavy cotton hoodie in boxy fit with cursive logo embroidery at chest and kangaroo pocket at front

Made in	Delivery	Style No.	Size set
Turkey	Oct-Nov	LDM202010	XS - XXL



**Crew Hoodie - Chive Green/Light Ivory**

**Quality** 100% Cotton - 400 gsm with brushed backside  
 Heavy cotton hoodie in boxy fit with cursive logo embroidery at chest and kangaroo pocket at front

Made in	Delivery	Style No.	Size set
Turkey	Oct-Nov	LDM202010	XS - XXL



**Brody Hoodie 2.0 - Ivory/Vintage Green**

**Quality** 100% Cotton - 320 gsm with brushed backside  
Soft brushed hoodie with monocolored text print at the back, small logo text print at the chest and kangaroo pocket

<b>Made in</b> Turkey	<b>Delivery</b> Oct-Nov	<b>Style No.</b> LDM202043	<b>Size set</b> XS - XXL
--------------------------	----------------------------	-------------------------------	-----------------------------



**Brody Hoodie 2.0 - Dark Navy/Mustard Yellow**

**Quality** 100% Cotton - 320 gsm with brushed backside  
Soft brushed hoodie with monocolored text print at the back, small logo text print at the chest and kangaroo pocket

<b>Made in</b> Turkey	<b>Delivery</b> Oct-Nov	<b>Style No.</b> LDM202043	<b>Size set</b> XS - XXL
--------------------------	----------------------------	-------------------------------	-----------------------------



**Brody Hoodie 2.0 - Rosin/Ivory**

**Quality** 100% Cotton - 320 gsm with brushed backside  
Soft brushed hoodie with monocolored text print at the back, small logo text print at the chest and kangaroo pocket

<b>Made in</b> Turkey	<b>Delivery</b> Oct-Nov	<b>Style No.</b> LDM202043	<b>Size set</b> XS - XXL
--------------------------	----------------------------	-------------------------------	-----------------------------





**Clyde AOP Hoodie - Arabian Spice**

**Quality** 100% Cotton - 385 gsm with brushed backside  
 Heavy dry cotton hoodie with subtle all-over print, small logo flower embroidery on chest and kangaroo pocket.

Made in	Delivery	Style No.	Size set
India	Oct-Nov	LDM202041	XS - XXL



**Clyde AOP Hoodie - Rosin**

**Quality** 100% Cotton - 385 gsm with brushed backside  
 Heavy dry cotton hoodie with subtle all-over print, small logo flower embroidery on chest and kangaroo pocket.

Made in	Delivery	Style No.	Size set
India	Oct-Nov	LDM202041	XS - XXL







## SWEATSHIRTS





**Ivy League Sweatshirt - Oatmeal Mélange**

**Quality** 100% Cotton - 450 gsm with unbrushed backside  
 Dry touch cotton crewneck sweatshirt with college inspired logo embroidery and print on chest

Made in	Delivery	Style No.	Size set
India	Oct-Nov	LDM200172	XS - XXL



**Ivy League Sweatshirt - Chive Green**

**Quality** 100% Cotton - 450 gsm with unbrushed backside  
 Dry touch cotton crewneck sweatshirt with college inspired logo embroidery and print on chest

Made in	Delivery	Style No.	Size set
India	Oct-Nov	LDM200172	XS - XXL



**Ivy League Sweatshirt - Black**

**Quality** 100% Cotton - 450 gsm with unbrushed backside  
 Dry touch cotton crewneck sweatshirt with college inspired logo embroidery and print on chest

Made in	Delivery	Style No.	Size set
India	Oct-Nov	LDM200172	XS - XXL





**Legacy Court Sweatshirt - Oyster Rose**

**Quality** 100% Organic Cotton - 450 gsm with unbrushed backside  
 Heavy dry cotton crewneck sweatshirt with naive watercolor look print artwork on chest and back

<b>Made in</b>	<b>Delivery</b>	<b>Style No.</b>	<b>Size set</b>
India	Oct-Nov	LDM200173	XS - XXL



**Legacy Court Sweatshirt - Dark Navy**

**Quality** 100% Organic Cotton - 450 gsm with unbrushed backside  
 Heavy dry cotton crewneck sweatshirt with naive watercolor look print artwork on chest and back

<b>Made in</b>	<b>Delivery</b>	<b>Style No.</b>	<b>Size set</b>
India	Oct-Nov	LDM200173	XS - XXL



**Legacy Court Sweatshirt - Grey Mélange**

**Quality** 100% Organic Cotton - 450 gsm with unbrushed backside  
 Heavy dry cotton crewneck sweatshirt with naive watercolor look print artwork on chest and back

<b>Made in</b>	<b>Delivery</b>	<b>Style No.</b>	<b>Size set</b>
India	Oct-Nov	LDM200173	XS - XXL





**Crew Sweatshirt - Ivory/Light Ivory**

**Quality** 100% Cotton - 400 gsm with brushed backside  
 Heavy cotton crewneck sweatshirt in a boxy fit with cursive logo embroidery at chest

**Made in** Turkey    **Delivery** Oct-Nov    **Style No.** LDM200128    **Size set** XS - XXL



**Crew Sweatshirt - Chive Green/Light Ivory**

**Quality** 100% Cotton - 400 gsm with brushed backside  
 Heavy cotton crewneck sweatshirt in a boxy fit with cursive logo embroidery at chest

**Made in** Turkey    **Delivery** Oct-Nov    **Style No.** LDM200128    **Size set** XS - XXL



**Fiore Sweatshirt - Snow Mélange**

**Quality** 100% Cotton - 550 gsm with unbrushed backside  
 Heavy cotton sweatshirt with logo and multicolored floral embroidery at the front

**Made in** India    **Delivery** Oct-Nov    **Style No.** LDM200175    **Size set** XS - XXL



**Fiore Sweatshirt - Dark Navy**

**Quality** 100% Cotton - 550 gsm with unbrushed backside  
 Heavy cotton sweatshirt with logo and multicolored floral embroidery at the front

**Made in** India    **Delivery** Oct-Nov    **Style No.** LDM200175    **Size set** XS - XXL



**Mini Encore Sweatshirt 2.0 - Rosin/Ivory**

**Quality** 100% Cotton - 400 gsm with brushed backside  
 Soft cotton crewneck sweatshirt with the iconic Les Deux logo printed in small letters at the front chest

**Made in** Turkey    **Delivery** Oct-Nov    **Style No.** LDM200179    **Size set** XS - XXL



**Mini Encore Sweatshirt 2.0 - Dark Sand Mélange/Ivory**

**Quality** 100% Cotton - 400 gsm with brushed backside  
 Soft cotton crewneck sweatshirt with the iconic Les Deux logo printed in small letters at the front chest

**Made in** Turkey    **Delivery** Oct-Nov    **Style No.** LDM200179    **Size set** XS - XXL



**Luca Sweatshirt - Bungee Cord**

**Quality** 100% Cotton - 320 gsm with brushed backside

Soft brushed crewneck sweatsirt with humouristic print and embroidery artwork at the chest and at back - made by Italian artist "My Poster Sucks"

<b>Made in</b> Turkey	<b>Delivery</b> Oct-Nov	<b>Style No.</b> LDM200177	<b>Size set</b> XS - XXL
--------------------------	----------------------------	-------------------------------	-----------------------------



**Tribeca Sweatshirt - Ivory**

**Quality** 100% Cotton - 320 gsm with brushed backside

Soft brushed crewneck sweatshirt with logo on sleeve and large backprint

<b>Made in</b> Turkey	<b>Delivery</b> Oct-Nov	<b>Style No.</b> LDM200178	<b>Size set</b> XS - XXL
--------------------------	----------------------------	-------------------------------	-----------------------------



**Luca Sweatshirt - Snow Mélange**

**Quality** 100% Cotton - 320 gsm with brushed backside

Soft brushed crewneck sweatsirt with humouristic print and embroidery artwork at the chest and at back - made by Italian artist "My Poster Sucks"

<b>Made in</b> Turkey	<b>Delivery</b> Oct-Nov	<b>Style No.</b> LDM200177	<b>Size set</b> XS - XXL
--------------------------	----------------------------	-------------------------------	-----------------------------



**Tribeca Sweatshirt - Rosin**

**Quality** 100% Cotton - 320 gsm with brushed backside

Soft brushed crewneck sweatshirt with logo on sleeve and large backprint

<b>Made in</b> Turkey	<b>Delivery</b> Oct-Nov	<b>Style No.</b> LDM200178	<b>Size set</b> XS - XXL
--------------------------	----------------------------	-------------------------------	-----------------------------





**Brody Sweatshirt 2.0 - Ivory/Vintage Green**

**Quality** 100% Cotton - 320 gsm with brushed backside

Soft brushed crewneck sweatshirt with monocolored text print at the back and small logo text print at the chest

<b>Made in</b> Turkey	<b>Delivery</b> Oct-Nov	<b>Style No.</b> LDM200176	<b>Size set</b> XS - XXL
--------------------------	----------------------------	-------------------------------	-----------------------------



**Brody Sweatshirt 2.0 - Dark Navy/Mustard Yellow**

**Quality** 100% Cotton - 320 gsm with brushed backside

Soft brushed crewneck sweatshirt with monocolored text print at the back and small logo text print at the chest

<b>Made in</b> Turkey	<b>Delivery</b> Oct-Nov	<b>Style No.</b> LDM200176	<b>Size set</b> XS - XXL
--------------------------	----------------------------	-------------------------------	-----------------------------



**Brody Sweatshirt 2.0 - Rosin/Ivory**

**Quality** 100% Cotton - 320 gsm with brushed backside

Soft brushed crewneck sweatshirt with monocolored text print at the back and small logo text print at the chest

<b>Made in</b> Turkey	<b>Delivery</b> Oct-Nov	<b>Style No.</b> LDM200176	<b>Size set</b> XS - XXL
--------------------------	----------------------------	-------------------------------	-----------------------------





**Clyde AOP Sweatshirt - Rosin**

**Quality** 100% Cotton - 385 gsm with brushed backside  
 Heavy dry cotton crewneck sweatshirt with subtle all-over print and small logo flower embroidery on chest

Made in	Delivery	Style No.	Size set
India	Oct-Nov	LDM200174	XS - XXL



**Clyde AOP Sweatshirt - Arabian Spice**

**Quality** 100% Cotton - 385 gsm with brushed backside  
 Heavy dry cotton crewneck sweatshirt with subtle all-over print and small logo flower embroidery on chest

Made in	Delivery	Style No.	Size set
India	Oct-Nov	LDM200174	XS - XXL



**Cory Zipper Rugby Sweatshirt - Dark Navy/Light Desert Sand**

**Quality** 100% Cotton - 320 gsm with unbrushed backside  
 Regular fitted rugby zipper sweatshirt with collar, contrast stripe and large embroidered logo at front

Made in	Delivery	Style No.	Size set
India	Oct-Nov	LDM200180	XS - XXL



**Cory Zipper Rugby Sweatshirt - Chive Green/Dark Ochre**

**Quality** 100% Cotton - 320 gsm with unbrushed backside  
 Regular fitted rugby zipper sweatshirt with collar, contrast stripe and large embroidered logo at front

Made in	Delivery	Style No.	Size set
India	Oct-Nov	LDM200180	XS - XXL





## T-SHIRTS



**Legacy Court T-Shirt - White**

**Quality** 100% Organic Cotton - 210 gsm  
Cotton t-shirt with naive watercolor look print artwork on chest and back

Made in	Delivery	Style No.	Size set
India	Oct-Nov	LDM101204	XS - XXL



**Legacy Court T-Shirt - Grey Mélangé**

**Quality** 100% Organic Cotton - 210 gsm  
Cotton t-shirt with naive watercolor look print artwork on chest and back

Made in	Delivery	Style No.	Size set
India	Oct-Nov	LDM101204	XS - XXL



**Legacy Court T-Shirt - Dark Navy**

**Quality** 100% Organic Cotton - 210 gsm  
Cotton t-shirt with naive watercolor look print artwork on chest and back

Made in	Delivery	Style No.	Size set
India	Oct-Nov	LDM101204	XS - XXL



**Legacy Court T-Shirt - Oyster Rose**

**Quality** 100% Organic Cotton - 210 gsm  
Cotton t-shirt with naive watercolor look print artwork on chest and back

Made in	Delivery	Style No.	Size set
India	Oct-Nov	LDM101204	XS - XXL





**Nørregaard T-shirt - Bel Air Blue Mélange**

**Quality** 100% Cotton - 180 gsm

A soft cotton slim fit T-shirt with stitched roll-up sleeves and contrast color embroidered logo at chest

Made in	Delivery	Style No.	Size set
Turkey	Oct-Nov	LDM101155	XS - XXL



**Nørregaard T-shirt - Bungee Cord**

**Quality** 100% Cotton - 180 gsm

A soft cotton slim fit T-shirt with stitched roll-up sleeves and contrast color embroidered logo at chest

Made in	Delivery	Style No.	Size set
Turkey	Oct-Nov	LDM101155	XS - XXL



**Nørregaard T-shirt - Oyster Rose**

**Quality** 100% Cotton - 180 gsm

A soft cotton slim fit T-shirt with stitched roll-up sleeves and contrast color embroidered logo at chest

Made in	Delivery	Style No.	Size set
Turkey	Oct-Nov	LDM101155	XS - XXL



**Nørregaard T-shirt - Arabian Spice**

**Quality** 100% Cotton - 180 gsm

A soft cotton slim fit T-shirt with stitched roll-up sleeves and contrast color embroidered logo at chest

Made in	Delivery	Style No.	Size set
Turkey	Oct-Nov	LDM101155	XS - XXL



**Nørregaard T-shirt - Chive Green**

**Quality** 100% Cotton - 180 gsm

A soft cotton slim fit T-shirt with stitched roll-up sleeves and contrast color embroidered logo at chest

Made in	Delivery	Style No.	Size set
Turkey	Oct-Nov	LDM101155	XS - XXL



**Nørregaard T-shirt - Blackberry**

**Quality** 100% Cotton - 180 gsm

A soft cotton slim fit T-shirt with stitched roll-up sleeves and contrast color embroidered logo at chest

Made in	Delivery	Style No.	Size set
Turkey	Oct-Nov	LDM101155	XS - XXL



**Ivy League T-Shirt - Oatmeal Mélange**

**Quality** 100% Organic Cotton - 210 gsm  
Soft cotton t-shirt with college inspired logo embroidery and print on chest

Made in	Delivery	Style No.	Size set
India	Oct-Nov	LDM101201	XS - XXL



**Ivy League T-Shirt - Chive Green**

**Quality** 100% Organic Cotton - 210 gsm  
Soft cotton t-shirt with college inspired logo embroidery and print on chest

Made in	Delivery	Style No.	Size set
India	Oct-Nov	LDM101201	XS - XXL



**Fiore T-Shirt - White**

**Quality** 100% Organic Cotton - 280 gsm  
Soft cotton t-shirt with logo and multicolored floral embroidery at the front

Made in	Delivery	Style No.	Size set
India	Oct-Nov	LDM101202	XS - XXL



**Fiore T-Shirt - Snow Mélange**

**Quality** 100% Organic Cotton - 280 gsm  
Soft cotton t-shirt with logo and multicolored floral embroidery at the front

Made in	Delivery	Style No.	Size set
India	Oct-Nov	LDM101202	XS - XXL



**Ivy League T-Shirt - Black**

**Quality** 100% Organic Cotton - 210 gsm  
Soft cotton t-shirt with college inspired logo embroidery and print on chest

Made in	Delivery	Style No.	Size set
India	Oct-Nov	LDM101201	XS - XXL



**Fiore T-Shirt - Dark Navy**

**Quality** 100% Organic Cotton - 280 gsm  
Soft cotton t-shirt with logo and multicolored floral embroidery at the front

Made in	Delivery	Style No.	Size set
India	Oct-Nov	LDM101202	XS - XXL



**Clyde T- Shirt - Rosin**

**Quality** 100% Organic Cotton - 180 gsm

Soft cotton T-shirt with large tonal paisley print on the back and small flower logo embroidery at the chest

Made in	Delivery	Style No.	Size set
India	Oct-Nov	LDM101203	XS - XXL



**Crew T-shirt - Chive Green/Light Ivory**

**Quality** 50% Organic Cotton - 50% Cotton - 240 gsm

Heavy relaxed fit cotton T-shirt with cursive logo embroidery at chest

Made in	Delivery	Style No.	Size set
Turkey	Oct-Nov	LDM101209	XS - XXL



**Crew T-shirt - Ivory/Light Ivory**

**Quality** 50% Organic Cotton - 50% Cotton - 240 gsm

Heavy relaxed fit cotton T-shirt with cursive logo embroidery at chest

Made in	Delivery	Style No.	Size set
Turkey	Oct-Nov	LDM101209	XS - XXL



**Clyde T- Shirt - Arabian Spice**

**Quality** 100% Organic Cotton - 180 gsm

Soft cotton T-shirt with large tonal paisley print on the back and small flower logo embroidery at the chest

Made in	Delivery	Style No.	Size set
India	Oct-Nov	LDM101203	XS - XXL



**Crew T-shirt - Black/Light Ivory**

**Quality** 50% Organic Cotton - 50% Cotton - 240 gsm

Heavy relaxed fit cotton T-shirt with cursive logo embroidery at chest

Made in	Delivery	Style No.	Size set
Turkey	Oct-Nov	LDM101209	XS - XXL





**Brody T-Shirt 2.0 - Ivory/Vintage Green**

**Quality** 100% Cotton - 210 gsm

T-shirt with monocolored text print at the back and small logo text print at the chest

<b>Made in</b> Turkey	<b>Delivery</b> Oct-Nov	<b>Style No.</b> LDM101205	<b>Size set</b> XS - XXL
--------------------------	----------------------------	-------------------------------	-----------------------------



**Brody T-Shirt 2.0 - Dark Navy/Mustard Yellow**

**Quality** 100% Cotton - 210 gsm

T-shirt with monocolored text print at the back and small logo text print at the chest

<b>Made in</b> Turkey	<b>Delivery</b> Oct-Nov	<b>Style No.</b> LDM101205	<b>Size set</b> XS - XXL
--------------------------	----------------------------	-------------------------------	-----------------------------



**Brody T-Shirt 2.0 - Rosin/Ivory**

**Quality** 100% Cotton - 210 gsm

T-shirt with monocolored text print at the back and small logo text print at the chest

<b>Made in</b> Turkey	<b>Delivery</b> Oct-Nov	<b>Style No.</b> LDM101205	<b>Size set</b> XS - XXL
--------------------------	----------------------------	-------------------------------	-----------------------------



**Tribeca T-Shirt - Rosin**

**Quality** 100% Cotton - 180 gsm  
Heavy weight t-shirt with large backprint

<b>Made in</b> Turkey	<b>Delivery</b> Oct-Nov	<b>Style No.</b> LDM101206	<b>Size set</b> XS - XXL
--------------------------	----------------------------	-------------------------------	-----------------------------



**Mini Encore T-Shirt 2.0 - White/Black**

**Quality** 100% Cotton - 200 gsm  
Heavy t-shirt with the iconic Les Deux logo printed in small letters at the front chest

<b>Made in</b> Turkey	<b>Delivery</b> Oct-Nov	<b>Style No.</b> LDM101208	<b>Size set</b> XS - XXL
--------------------------	----------------------------	-------------------------------	-----------------------------



**Mini Encore T-Shirt 2.0 - Rosin/Ivory**

**Quality** 100% Cotton - 200 gsm  
Heavy t-shirt with the iconic Les Deux logo printed in small letters at the front chest

<b>Made in</b> Turkey	<b>Delivery</b> Oct-Nov	<b>Style No.</b> LDM101208	<b>Size set</b> XS - XXL
--------------------------	----------------------------	-------------------------------	-----------------------------



**Tribeca T-Shirt - Ivory**

**Quality** 100% Cotton - 180 gsm  
Heavy weight t-shirt with large backprint

<b>Made in</b> Turkey	<b>Delivery</b> Oct-Nov	<b>Style No.</b> LDM101206	<b>Size set</b> XS - XXL
--------------------------	----------------------------	-------------------------------	-----------------------------



**Mini Encore T-Shirt 2.0 - Dark Sand Mélange/Ivory**

**Quality** 100% Cotton - 200 gsm  
Heavy t-shirt with the iconic Les Deux logo printed in small letters at the front chest

<b>Made in</b> Turkey	<b>Delivery</b> Oct-Nov	<b>Style No.</b> LDM101208	<b>Size set</b> XS - XXL
--------------------------	----------------------------	-------------------------------	-----------------------------



**Luca T-Shirt - Black**

**Quality** 100% Cotton - 245 gsm

Heavy weight t-shirt with naive styled print and embroidery artwork at the chest and at back - made by Italian artist "My Poster Sucks"

<b>Made in</b> Turkey	<b>Delivery</b> Oct-Nov	<b>Style No.</b> LDM101207	<b>Size set</b> XS - XXL
--------------------------	----------------------------	-------------------------------	-----------------------------



**Luca T-Shirt - White**

**Quality** 100% Cotton - 245 gsm

Heavy weight t-shirt with naive styled print and embroidery artwork at the chest and at back - made by Italian artist "My Poster Sucks"

<b>Made in</b> Turkey	<b>Delivery</b> Oct-Nov	<b>Style No.</b> LDM101207	<b>Size set</b> XS - XXL
--------------------------	----------------------------	-------------------------------	-----------------------------



**Luca T-Shirt - Bungee Cord**

**Quality** 100% Cotton - 245 gsm

Heavy weight t-shirt with naive styled print and embroidery artwork at the chest and at back - made by Italian artist "My Poster Sucks"

<b>Made in</b> Turkey	<b>Delivery</b> Oct-Nov	<b>Style No.</b> LDM101207	<b>Size set</b> XS - XXL
--------------------------	----------------------------	-------------------------------	-----------------------------



**Luca T-Shirt - Dark Navy**

**Quality** 100% Cotton - 245 gsm

Heavy weight t-shirt with naive styled print and embroidery artwork at the chest and at back - made by Italian artist "My Poster Sucks"

<b>Made in</b> Turkey	<b>Delivery</b> Oct-Nov	<b>Style No.</b> LDM101207	<b>Size set</b> XS - XXL
--------------------------	----------------------------	-------------------------------	-----------------------------





**Barry Baseball Jersey LS Shirt - Ivory**

**Quality** 100% Cotton - 360 gsm

Long sleeved baseball shirt in soft cotton twill jersey with flag label and logo embroidery at chest

Made in	Delivery	Style No.	Size set
India	Oct-Nov	LDM410204	XS - XXL



**Barry Baseball Jersey LS Shirt - Black**

**Quality** 100% Cotton - 360 gsm

Long sleeved baseball shirt in soft cotton twill jersey with flag label and logo embroidery at chest

Made in	Delivery	Style No.	Size set
India	Oct-Nov	LDM410204	XS - XXL



**Tribeca LS T-Shirt - Ivory**

**Quality** 100% Cotton - 180 gsm

Heavy t-shirt with text print on sleeves and large backprint

Made in	Delivery	Style No.	Size set
Turkey	Oct-Nov	LDM110037	XS - XXL



**Tribeca LS T-Shirt - Rosin**

**Quality** 100% Cotton - 180 gsm

Heavy t-shirt with text print on sleeves and large backprint

Made in	Delivery	Style No.	Size set
Turkey	Oct-Nov	LDM110037	XS - XXL





**Crew LS T-Shirt - Black/Light Ivory**

**Quality** 50% Organic Cotton - 50% Cotton - 240 gsm

Heavy relaxed fit cotton long sleeved t-shirt with cursive logo embroidery at chest

<b>Made in</b>	<b>Delivery</b>	<b>Style No.</b>	<b>Size set</b>
Turkey	Oct-Nov	LDM110038	XS - XXL



**Crew LS T-Shirt - Ivory/Light Ivory**

**Quality** 50% Organic Cotton - 50% Cotton - 240 gsm

Heavy relaxed fit cotton long sleeved t-shirt with cursive logo embroidery at chest

<b>Made in</b>	<b>Delivery</b>	<b>Style No.</b>	<b>Size set</b>
Turkey	Oct-Nov	LDM110038	XS - XXL



**Crew LS T-Shirt - Chive Green/Light Ivory**

**Quality** 50% Organic Cotton - 50% Cotton - 240 gsm

Heavy relaxed fit cotton long sleeved t-shirt with cursive logo embroidery at chest

<b>Made in</b>	<b>Delivery</b>	<b>Style No.</b>	<b>Size set</b>
Turkey	Oct-Nov	LDM110038	XS - XXL





**SWEATPANTS**





**Brody Sweatpants 2.0 - Ivory/Vintage Green**

**Quality** 100% Cotton - 320 gsm with brushed backside  
Soft brushed cotton sweatpants with drawstring waist and contrast logo in vertical print on front

<b>Made in</b>	<b>Delivery</b>	<b>Style No.</b>	<b>Size set</b>
Turkey	Oct-Nov	LDM530060	XS - XXL



**Brody Sweatpants 2.0 - Dark Navy/Mustard Yellow**

**Quality** 100% Cotton - 320 gsm with brushed backside  
Soft brushed cotton sweatpants with drawstring waist and contrast logo in vertical print on front

<b>Made in</b>	<b>Delivery</b>	<b>Style No.</b>	<b>Size set</b>
Turkey	Oct-Nov	LDM530060	XS - XXL



**Brody Sweatpants 2.0 - Rosin/Ivory**

**Quality** 100% Cotton - 320 gsm with brushed backside  
Soft brushed cotton sweatpants with drawstring waist and contrast logo in vertical print on front

<b>Made in</b>	<b>Delivery</b>	<b>Style No.</b>	<b>Size set</b>
Turkey	Oct-Nov	LDM530060	XS - XXL





## PYJAMAS





**Ludwig Flannel Pyjama Shirt & Pants - Rosin/Black**

**Quality** 100% Cotton

Pyjama shirt and pants set in check pattern brushed cotton flannel

**Made in**  
China

**Delivery**  
Oct-Nov

**Style No.**  
LDM410201

**Size set**  
XS - XXL





**CAPS**



#### Baseball Cap Suede II - Dark Grey/Ivory

**Quality** Top: 100% Cotton, Visor: 100% Polyester

Baseball cap in textured cotton twill with matching suede-style visor and contrast 3D embroidered logo on front

<b>Made in</b>	<b>Delivery</b>	<b>Style No.</b>	<b>Size set</b>
China	Oct-Nov	LDM702003	One Size



#### Baseball Cap Suede II - Light Desert Sand/Arabian Spice

**Quality** Top: 100% Cotton, Visor: 100% Polyester

Baseball cap in textured cotton twill with matching suede-style visor and contrast 3D embroidered logo on front

<b>Made in</b>	<b>Delivery</b>	<b>Style No.</b>	<b>Size set</b>
China	Oct-Nov	LDM702003	One Size



#### Baseball Cap Contrast Suede II - Mountain Grey/Coffee Brown

**Quality** Top: 100% Cotton, Visor: 100% Polyester

Baseball cap in textured cotton twill with contrast-color suede-style visor and 3D logo on front

<b>Made in</b>	<b>Delivery</b>	<b>Style No.</b>	<b>Size set</b>
China	Oct-Nov	LDM702090	One Size



#### Baseball Cap Contrast Suede II - Light Desert Sand/Walnut

**Quality** Top: 100% Cotton, Visor: 100% Polyester

Baseball cap in textured cotton twill with contrast-color suede-style visor and 3D logo on front

<b>Made in</b>	<b>Delivery</b>	<b>Style No.</b>	<b>Size set</b>
China	Oct-Nov	LDM702090	One Size



#### Baseball Cap Suede II - Rosin

**Quality** Top: 100% Cotton, Visor: 100% Polyester

Baseball cap in textured cotton twill with matching suede-style visor and contrast 3D embroidered logo on front

<b>Made in</b>	<b>Delivery</b>	<b>Style No.</b>	<b>Size set</b>
China	Oct-Nov	LDM702003	One Size



#### Baseball Cap Suede II - Blackberry

**Quality** Top: 100% Cotton, Visor: 100% Polyester

Baseball cap in textured cotton twill with matching suede-style visor and contrast 3D embroidered logo on front

<b>Made in</b>	<b>Delivery</b>	<b>Style No.</b>	<b>Size set</b>
China	Oct-Nov	LDM702003	One Size



#### Encore Wool Contrast Cap - Black/Coffee Brown

**Quality** Top: 60% Polyester - 40% Wool, Visor: 100% Polyester

Baseball cap with contrast colored 3D embroidered Encore logo on front in a heavy wool mix and imitation suede visor in contrast color

<b>Made in</b>	<b>Delivery</b>	<b>Style No.</b>	<b>Size set</b>
China	Oct-Nov	LDM702097	One Size



#### Encore Wool Contrast Cap - Chive Green/Rosin

**Quality** Top: 60% Polyester - 40% Wool, Visor: 100% Polyester

Baseball cap with contrast colored 3D embroidered Encore logo on front in a heavy wool mix and imitation suede visor in contrast color

<b>Made in</b>	<b>Delivery</b>	<b>Style No.</b>	<b>Size set</b>
China	Oct-Nov	LDM702097	One Size



**Encore Organic Baseball Cap - Dark Navy/Dark Ochre**

**Quality** 100% Organic Cotton

Organic cotton baseball cap with 3D embroidered Encore logo on front

<b>Made in</b>	<b>Delivery</b>	<b>Style No.</b>	<b>Size set</b>
China	Oct-Nov	DM702043	One Size



**Encore Organic Baseball Cap - Arabian Spice/Ivory**

**Quality** 100% Organic Cotton

Organic cotton baseball cap with 3D embroidered Encore logo on front

<b>Made in</b>	<b>Delivery</b>	<b>Style No.</b>	<b>Size set</b>
China	Oct-Nov	DM702043	One Size



**Encore Organic Baseball Cap - Walnut/Blackberry**

**Quality** 100% Organic Cotton

Organic cotton baseball cap with 3D embroidered Encore logo on front

<b>Made in</b>	<b>Delivery</b>	<b>Style No.</b>	<b>Size set</b>
China	Oct-Nov	DM702043	One Size







#### Luca Baseball Cap - Black

**Quality** 78% Cotton - 16% Viscose - 6% Elastane

Baseball cap in soft twill material with naive artistic text and embroidery artwork at the front and side - made by Italian artist "My Poster Sucks"

<b>Made in</b>	<b>Delivery</b>	<b>Style No.</b>	<b>Size set</b>
China	Oct-Nov	LDM702094	One Size



#### Luca Baseball Cap - Snow Mélange

**Quality** 78% Cotton - 16% Viscose - 6% Elastane

Baseball cap in soft twill material with naive artistic text and embroidery artwork at the front and side - made by Italian artist "My Poster Sucks"

<b>Made in</b>	<b>Delivery</b>	<b>Style No.</b>	<b>Size set</b>
China	Oct-Nov	LDM702094	One Size



#### Luca Baseball Cap - Bungee Cord

**Quality** 78% Cotton - 16% Viscose - 6% Elastane

Baseball cap in soft twill material with naive artistic text and embroidery artwork at the front and side - made by Italian artist "My Poster Sucks"

<b>Made in</b>	<b>Delivery</b>	<b>Style No.</b>	<b>Size set</b>
China	Oct-Nov	LDM702094	One Size



#### Luca Baseball Cap - Dark Navy

**Quality** 78% Cotton - 16% Viscose - 6% Elastane

Baseball cap in soft twill material with naive artistic text and embroidery artwork at the front and side - made by Italian artist "My Poster Sucks"

<b>Made in</b>	<b>Delivery</b>	<b>Style No.</b>	<b>Size set</b>
China	Oct-Nov	LDM702094	One Size



#### Houndstooth Wool Cap - Warm Sand/Black

**Quality** Top: 50% Wool - 50% Recycled Polyester, Visor: 100% Polyester  
Baseball cap in classic houndstooth patterned heavy wool-mix quality and visor in contrast colored imitation suede

Made in	Delivery	Style No.	Size set
China	Oct-Nov	LDM702096	One Size



#### Jacquard Baseball Cap - Rosin/Chive Green

**Quality** 100% Polyester  
Baseball cap in shiny subtle colored flower jacquard fabric with matching imitation suede visor

Made in	Delivery	Style No.	Size set
China	Oct-Nov	LDM702095	One Size



#### Encore Dad Cap - Olive Night

**Quality** 100% Cotton  
Vintage feel dad cap in brushed cotton twill with tonal 3D logo embroidered on front

Made in	Delivery	Style No.	Size set
China	Oct-Nov	LDM703029	One Size



#### Encore Dad Cap - Arabian Spice

**Quality** 100% Cotton  
Vintage feel dad cap in brushed cotton twill with tonal 3D logo embroidered on front

Made in	Delivery	Style No.	Size set
China	Oct-Nov	LDM703029	One Size



#### Ferdinand Dad Cap - Dark Navy

**Quality** 78% Cotton - 16% Viscose - 6% Elastane  
Soft dad cap in brushed cotton twill with flower bouquet and logo embroidery at the front

Made in	Delivery	Style No.	Size set
China	Oct-Nov	LDM703039	One Size



#### Ferdinand Dad Cap - Light Sand

**Quality** 78% Cotton - 16% Viscose - 6% Elastane  
Soft dad cap in brushed cotton twill with flower bouquet and logo embroidery at the front

Made in	Delivery	Style No.	Size set
China	Oct-Nov	LDM703039	One Size



#### Les Deux Dad Cap - Black/Light Ivory

**Quality** 78% Cotton - 16% Viscose - 6% Elastane  
Soft dad cap in brushed cotton twill with classic varsity styled logo embroidery at the front

Made in	Delivery	Style No.	Size set
China	Oct-Nov	LDM703040	One Size



#### Les Deux Dad Cap - Oatmeal Mélange/Light Ivory

**Quality** 78% Cotton - 16% Viscose - 6% Elastane  
Soft dad cap in brushed cotton twill with classic varsity styled logo embroidery at the front

Made in	Delivery	Style No.	Size set
China	Oct-Nov	LDM703040	One Size



**Van Corduroy Dad Cap - Multicolor**

**Quality** 100% Cotton  
 All over printed soft 8 wale corduroy dad cap with classic cursive logo embroidered on front

Made in	Delivery	Style No.	Size set
China	Oct-Nov	LDM703041	One Size



**Van AOP Dad Cap - Rosin/Dark Ochre**

**Quality** 54% Cotton - 38% Polyester - 8% Polyamide  
 All over printed dad cap in brushed dry cotton-blend material with classic cursive logo embroidered on the side

Made in	Delivery	Style No.	Size set
China	Oct-Nov	LDM703042	One Size



**Willy Corduroy Bucket Hat - Multicolor**

**Quality** 100% Cotton  
 All over printed soft 8 wale corduroy bucket hat with classic cursive logo embroidered at the side

Made in	Delivery	Style No.	Size set
China	Oct-Nov	LDM704017	One Size



**Willy AOP Bucket Hat - Rosin/Dark Ochre**

**Quality** 54% Cotton - 38% Polyester - 8% Polyamide  
 All over printed bucket hat in brushed dry cotton-blend material with classic cursive logo embroidered at the side

Made in	Delivery	Style No.	Size set
China	Oct-Nov	LDM704018	One Size







**Ivy League Brushed Cap - Black**

**Quality** Top: 78% Polyester - 16% Viscose - 6% Elastane, Visor: 100% Polyester  
Soft snapback cap with college inspired logo embroidery at the front

Made in	Delivery	Style No.	Size set
China	Oct-Nov	LDM703038	One Size



**Ivy League Brushed Cap - Ivory/Olive Night**

**Quality** Top: 78% Polyester - 16% Viscose - 6% Elastane, Visor: 100% Polyester  
Soft snapback cap with college inspired logo embroidery at the front

Made in	Delivery	Style No.	Size set
China	Oct-Nov	LDM703038	One Size



**Ivy League Cap - Mountain Grey**

**Quality** 100% Cotton  
Cotton snapback cap with college inspired logo embroidery at the front

Made in	Delivery	Style No.	Size set
China	Oct-Nov	LDM703043	One Size



**Ivy League Cap - Dark Navy**

**Quality** 100% Cotton  
Cotton snapback cap with college inspired logo embroidery at the front

Made in	Delivery	Style No.	Size set
China	Oct-Nov	LDM703043	One Size





**BEANIES & SCARFS**



**Wells Wool Beanie - Black**

**Quality** 100% Wool  
 Rib-knitted wool beanie with logo patch at the front

<b>Made in</b> China	<b>Delivery</b> Oct-Nov	<b>Style No.</b> LDM710026	<b>Size set</b> One Size
-------------------------	----------------------------	-------------------------------	-----------------------------



**Wells Wool Beanie - Oyster Rose**

**Quality** 100% Wool  
 Rib-knitted wool beanie with logo patch at the front

<b>Made in</b> China	<b>Delivery</b> Oct-Nov	<b>Style No.</b> LDM710026	<b>Size set</b> One Size
-------------------------	----------------------------	-------------------------------	-----------------------------



**Wells Wool Beanie - Arabian Spice**

**Quality** 100% Wool  
 Rib-knitted wool beanie with logo patch at the front

<b>Made in</b> China	<b>Delivery</b> Oct-Nov	<b>Style No.</b> LDM710026	<b>Size set</b> One Size
-------------------------	----------------------------	-------------------------------	-----------------------------



**Wells Wool Beanie - Walnut Mélange**

**Quality** 100% Wool  
 Rib-knitted wool beanie with logo patch at the front

<b>Made in</b> China	<b>Delivery</b> Oct-Nov	<b>Style No.</b> LDM710026	<b>Size set</b> One Size
-------------------------	----------------------------	-------------------------------	-----------------------------



**Wells Wool Beanie - Light Desert Sand**

**Quality** 100% Wool  
 Rib-knitted wool beanie with logo patch at the front

<b>Made in</b> China	<b>Delivery</b> Oct-Nov	<b>Style No.</b> LDM710026	<b>Size set</b> One Size
-------------------------	----------------------------	-------------------------------	-----------------------------





**Les Deux Check Wool Scarf - Rosin/Dark Navy**

**Quality** 100% Wool  
 Check wool scarf with cursive logo embroidery  
 Scarf measures 51 x 172 cm

Made in	Delivery	Style No.	Size set
China	Oct-Nov	LDM910019	One Size



**Les Deux Check Wool Scarf - Light Desert Sand/Walnut**

**Quality** 100% Wool  
 Check wool scarf with cursive logo embroidery  
 Scarf measures 51 x 172 cm

Made in	Delivery	Style No.	Size set
China	Oct-Nov	LDM910019	One Size



**Les Deux Check Wool Scarf - Chive Green/Blackberry**

**Quality** 100% Wool  
 Check wool scarf with cursive logo embroidery  
 Scarf measures 51 x 172 cm

Made in	Delivery	Style No.	Size set
China	Oct-Nov	LDM910019	One Size





SOCKS & TIES



**Brody Rib Socks 2-Pack - Ivory/Vintage Green**

**Quality** 74% Organic Cotton - 25% Polyamide - 1% Elastane  
Cotton ribbed sport socks with contrast logo

Made in	Delivery	Style No.	Size set
China	Oct-Nov	LDM950017	39-42, 43-46



**Brody Rib Socks 2-Pack - Dark Navy/Mustard Yellow**

**Quality** 74% Organic Cotton - 25% Polyamide - 1% Elastane  
Cotton ribbed sport socks with contrast logo

Made in	Delivery	Style No.	Size set
China	Oct-Nov	LDM950017	39-42, 43-46



**Woods Rib Stripe Socks - 2-Pack - Off White/Black**

**Quality** 74% Organic Cotton - 25% Polyamide - 1% Elastane  
Cotton ribbed sport socks with contrast stripes

Made in	Delivery	Style No.	Size set
China	Oct-Nov	LDM950013	39-42, 43-46



**Woods Rib Stripe Socks - 2-Pack - Off White/Rosin**

**Quality** 74% Organic Cotton - 25% Polyamide - 1% Elastane  
Cotton ribbed sport socks with contrast stripes

Made in	Delivery	Style No.	Size set
China	Oct-Nov	LDM950013	39-42, 43-46



**Brody Rib Socks 2-Pack - Rosin/White**

**Quality** 74% Organic Cotton - 25% Polyamide - 1% Elastane  
Cotton ribbed sport socks with contrast logo

Made in	Delivery	Style No.	Size set
China	Oct-Nov	LDM950017	39-42, 43-46





**Paisley Tie - Dark Ochre**

**Quality** 100% Silk  
 Jacquard printed silk tie. Made in Italy  
 Width at front: 8 cm

Made in	Delivery	Style No.	Size set
Italy	Oct-Nov	LDM980044	One Size



**Court Tie - Chive Green/Mustard Yellow**

**Quality** 100% Silk  
 Jacquard printed silk tie. Made in Italy  
 Width at front: 8 cm

Made in	Delivery	Style No.	Size set
Italy	Oct-Nov	LDM980047	One Size



**Felipe Tie - Black**

**Quality** 100% Silk  
 Jacquard printed silk tie. Made in Italy  
 Width at front: 8 cm

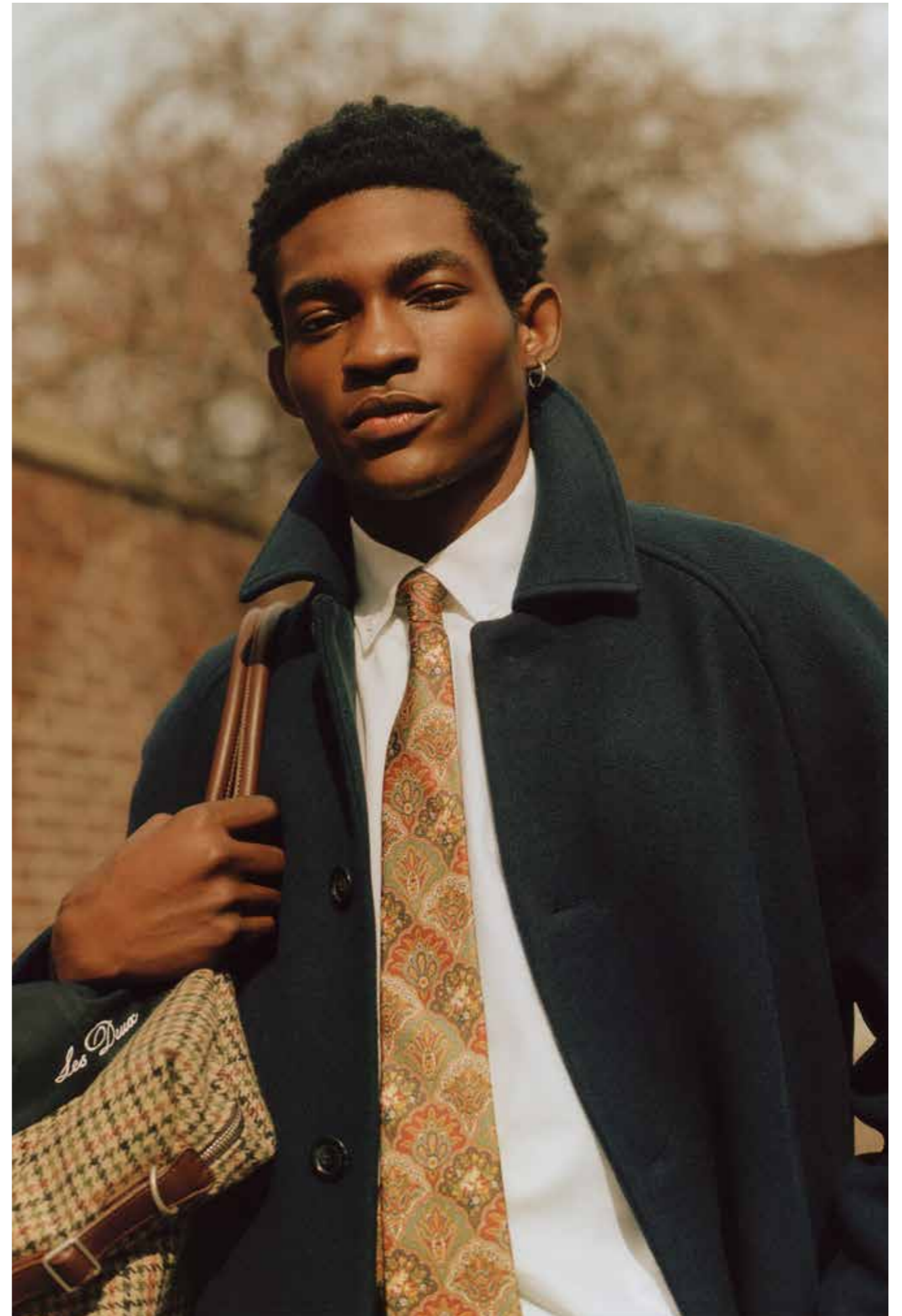
Made in	Delivery	Style No.	Size set
Italy	Oct-Nov	LDM980048	One Size



**Bouquet Tie - Multicolor**

**Quality** 100% Silk  
 Jacquard printed silk tie. Made in Italy  
 Width at front: 8 cm

Made in	Delivery	Style No.	Size set
Italy	Oct-Nov	LDM980049	One Size





**BAGS**



**Leather Weekend Bag - Black**

**Quality** 100% Leather  
 Leather weekend bag with metal zippers and debossed logo  
 - Length: 53 cm, Width: 21 cm, Height: 33 cm, 35L volume

Made in	Delivery	Style No.	Size set
India	Oct-Nov	LDM940064	One Size



**Leather Laptop Sleeve - Black**

**Quality** 100% Leather  
 Leather laptop sleeve with metal zippers and debossed logo.  
 Fits 13-inch laptops  
 - Length: 35 cm, Width: 3 cm, Height: 25 cm, 2½L volume

Made in	Delivery	Style No.	Size set
India	Oct-Nov	LDM940063	One Size



**Houndstooth Wool Weekend Bag - Warm Sand/Black**

**Quality** Main: 50% Wool - 50% Recycled Polyester, Trim: 100% Leather  
 Houndstooth wool weekend bag with metal zippers, leather trim and embroidered logo  
 - Length: 53 cm, Width: 21 cm, Height: 33 cm, 35L volume

Made in	Delivery	Style No.	Size set
China	Oct-Nov	LDM940100	One Size



**Houndstooth Wool Laptop Sleeve - Warm Sand/Black**

**Quality** 50% Wool - 50% Recycled Polyester  
 Houndstooth wool laptop sleeve with metal zippers and debossed logo.  
 Fits 13-inch laptops  
 - Length: 35 cm, Width: 3 cm, Height: 25 cm, 2½L volume

Made in	Delivery	Style No.	Size set
China	Oct-Nov	LDM940101	One Size



**Leather Wash Bag - Black**

**Quality** 100% Leather  
 Leather wash bag with metal zippers and debossed logo  
 - Length: 22 cm, Width: 10 cm, Height: 12,5 cm, 2½L volume

Made in	Delivery	Style No.	Size set
India	Oct-Nov	LDM940065	One Size





SHOES



**Truman Houndstooth Padded Slipper - Warm Sand/Black**

**Quality** Upper: 50% Wool - 50% Recycled Polyester  
 Padded wool slippers with foam sole and embroidered logo at front

<b>Made in</b> China	<b>Delivery</b> Oct-Nov	<b>Style No.</b> LDM840018	<b>Size set</b> 40-46
-------------------------	----------------------------	-------------------------------	--------------------------



**Truman AOP Padded Slipper - Rosin/Dark Ochre**

**Quality** Upper: 54% Cotton - 38% Polyester - 8% Polyamide  
 Padded all over printed dry cotton-blend slippers with foam sole and embroidered logo at front

<b>Made in</b> China	<b>Delivery</b> Oct-Nov	<b>Style No.</b> LDM840020	<b>Size set</b> 40-46
-------------------------	----------------------------	-------------------------------	--------------------------



**Truman Jacquard Padded Slipper - Rosin/Chive Green**

**Quality** Upper: 100% Polyester  
 Padded jacquard slippers with foam sole and embroidered logo at front

<b>Made in</b> China	<b>Delivery</b> Oct-Nov	<b>Style No.</b> LDM840019	<b>Size set</b> 40-46
-------------------------	----------------------------	-------------------------------	--------------------------



